

---

# **Solid Waste Management Plan**

## **2007 - 2017**

---

*Prepared for:*

**City of Fairburn**

April 21, 2008

**Integrated Science & Engineering, Inc.**  
105 McIntosh Crossing  
Fayetteville, GA 30214  
770.461.4292

---

# TABLE OF CONTENTS

---

<b>1</b>	<b>INTRODUCTION.....</b>	<b>1</b>
1.1	PERSON RESPONSIBLE FOR THE PLAN .....	1
1.2	PLANNING AREA .....	1
1.3	NATURAL RESOURCES .....	4
1.4	POPULATION .....	4
1.5	SEASONAL POPULATION VARIATION .....	5
1.6	NUMBER OF HOUSEHOLDS .....	5
1.7	ECONOMIC ACTIVITY .....	6
1.8	PUBLIC INVOLVEMENT DURING THE PLANNING PROCESS.....	6
<b>2</b>	<b>WASTE DISPOSAL STREAM ANALYSIS.....</b>	<b>8</b>
2.1	AMOUNT OF WASTE DISPOSED .....	8
2.2	UNIQUE CONDITIONS AND/OR SEASONAL VARIATIONS .....	8
2.3	WASTE GENERATING DISASTER .....	9
2.4	DISPOSAL RATE .....	9
2.5	PROGRESS TOWARD PER CAPITA REDUCTION OF MSW .....	10
2.6	WASTE CHARACTERIZATION .....	10
2.7	PROJECTION OF WASTE TO BE DISPOSED .....	12
<b>3</b>	<b>WASTE REDUCTION ELEMENT.....</b>	<b>13</b>
3.1	INVENTORY & ASSESSMENT OF WASTE REDUCTION PROGRAMS.....	13
3.1.1	Source Reduction Programs.....	13
3.1.2	Recycling Programs & Facilities .....	13
3.1.3	Yard Trimmings Programs & Facilities.....	14
3.1.4	Special Materials Recycling .....	14
3.1.5	Assessment of Current Waste Reduction & Recycling Programs .....	14
3.1.6	Needs & Goals .....	15
<b>4</b>	<b>COLLECTION ELEMENT .....</b>	<b>16</b>
4.1	INVENTORY & ASSESSMENT OF COLLECTION PROGRAMS .....	16
4.2	DROP-OFF LOCATIONS & TRANSFER STATIONS .....	16
4.3	YARD TRIMMINGS & BULK ITEM COLLECTION.....	16
4.4	ILLEGAL DUMPING / LITTERING .....	17
4.5	ADEQUACY OF COLLECTION PROGRAMS .....	18
4.6	CONTINGENCY STRATEGY .....	18
4.7	NEEDS & GOALS .....	19
<b>5</b>	<b>DISPOSAL ELEMENT.....</b>	<b>20</b>
5.1	INVENTORY & ASSESSMENT OF FACILITIES LOCATED IN THE CITY .....	20
5.2	LANDFILLS .....	20
5.3	TRANSFER STATIONS .....	20
5.4	INVENTORY & ASSESSMENT OF DISPOSAL FACILITIES USED BY THE CITY .....	21
5.5	ASSURANCE OF 10-YEAR CAPACITY .....	21

5.6	CONTINGENCY STRATEGY .....	22
5.7	NEEDS & GOALS .....	22
<b>6</b>	<b>LAND LIMITATION ELEMENT .....</b>	<b>24</b>
6.1	NATURAL & ENVIRONMENTAL LIMITATIONS .....	24
6.1.1	Water Supply Watersheds .....	24
6.1.2	Groundwater Recharge Areas .....	24
6.1.3	Wetlands .....	25
6.1.4	River Corridors .....	25
6.1.5	Protected Mountains .....	25
6.1.6	Floodplains.....	25
6.1.7	Fault Zones, Seismic Impact Zones & Unstable Areas .....	26
6.1.8	Significant Groundwater Recharge Areas .....	26
6.2	LAND USE & ZONING LIMITATIONS .....	28
6.2.1	Zoning Restrictions .....	28
6.2.2	National Historic Sites .....	28
6.2.3	Airport Safety.....	28
6.2.4	Political Subdivisions.....	28
6.3	PLAN CONSISTENCY.....	30
6.4	NEEDS & GOALS .....	31
<b>7</b>	<b>EDUCATION &amp; PUBLIC INVOLVEMENT ELEMENT .....</b>	<b>32</b>
7.1	INVENTORY & ASSESSMENT OF PUBLIC EDUCATION & INVOLVEMENT .....	32
7.2	NEEDS & GOALS .....	33
<b>8</b>	<b>IMPLEMENTATION STRATEGY .....</b>	<b>34</b>
8.1	SUMMARY OF NEEDS & GOALS .....	34
8.2	IMPLEMENTATION STRATEGY .....	35
8.3	PLAN UPDATES & AMENDMENTS.....	38

**TABLES**

TABLE 1.	POPULATION COMPARISONS .....	4
TABLE 2.	POPULATION PROJECTIONS .....	5
TABLE 3.	NUMBER OF HOUSEHOLDS .....	5
TABLE 4.	TYPES OF INDUSTRIES .....	6
TABLE 5.	WASTE BY SECTOR – CITY OF FAIRBURN.....	8
TABLE 6.	MSW DISPOSAL RATES – CITY OF FAIRBURN .....	9
TABLE 7.	C&D DISPOSAL RATES – CITY OF FAIRBURN .....	10
TABLE 8.	WASTE COMPOSITION CHARACTERIZATION OF MSW DISPOSED.....	10
TABLE 9.	MSW DISPOSAL PROJECTIONS .....	12
TABLE 10.	RECYCLING PROGRAMS .....	14
TABLE 11.	CITY OF FAIRBURN WASTE HAULER.....	16
TABLE 12.	COLLECTION PROGRAMS .....	17
TABLE 13.	LANDFILLS.....	20
TABLE 14.	TRANSFER STATIONS .....	21
TABLE 15.	PUBLIC EDUCATION & INVOLVEMENT PROGRAMS .....	32
TABLE 16.	IMPLEMENTATION STRATEGY .....	35

**FIGURES**

FIGURE 1. LOCATION MAP ..... 2  
FIGURE 2. PLANNING AREA..... 3  
FIGURE 3. LANDFILLS, TRANSFER STATIONS & RECYCLING CENTERS..... 23  
FIGURE 4. NATURAL & ENVIRONMENTAL LIMITATIONS ..... 27  
FIGURE 5. LAND USE & ZONING LIMITATIONS..... 29

**APPENDICES**

Public Education Materials ..... Appendix A  
Solid Waste Ordinance ..... Appendix B  
Pine Ridge Regional Landfill Capacity Assurance Letter ..... Appendix C  
Executed Resolution ..... Appendix D

---

# **1 INTRODUCTION**

---

The City of Fairburn completed the Comprehensive Plan update in October 2006. The following Solid Waste Management Plan for the City is being completed in conjunction with ongoing planning efforts and covers the years 2007 – 2017. The Solid Waste Management Plan is being written based on the new rules and requirements of the Georgia Department of Community Affairs (DCA), Minimum Planning Standards and Procedures for Solid Waste Management, as revised in 2004. The Minimum Planning Standards and Procedures have been broken down into five core elements as listed below:

- Waste Reduction
- Collection
- Disposal
- Land Limitation
- Education & Public Involvement

A waste disposal stream analysis and an implementation plan are also included within the contents of this Plan.

## **1.1 PERSON RESPONSIBLE FOR THE PLAN**

The person responsible for updating the City of Fairburn’s Solid Waste Management Plan is:

City of Fairburn  
Public Works Director / City Engineer  
Mail: 56 Malone Street  
Office: 26 W. Campbellton Street – Suite 110  
Fairburn, GA 30213  
Phone: 770-683-4286  
Fax: 770-306-6921  
Email: troy@fairburn.com

Any questions related to the contents of this plan or to request additional information should be directed to the City Public Works Director.

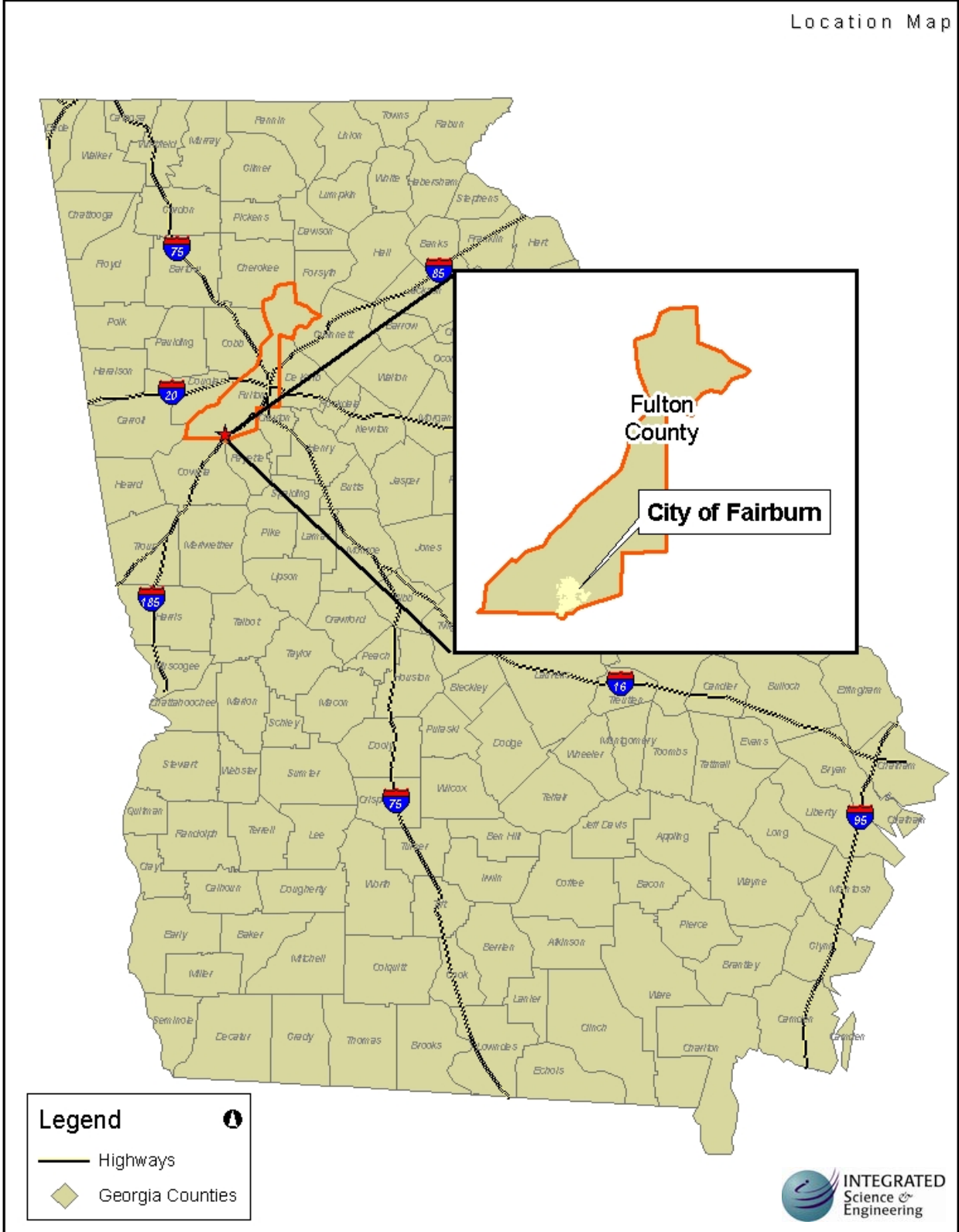
## **1.2 PLANNING AREA**

This Solid Waste Management Plan covers all areas within the city limits of Fairburn. The City of Fairburn covers an area of roughly 10,785 acres or 17 square miles and is located in the southern part of Fulton County. Figure 1 illustrates the location of Fairburn within the State of Georgia. The planning area is illustrated in closer detail in Figure 2.

Figure 1. Location Map

City of Fairburn Solid Waste Management Plan

Location Map

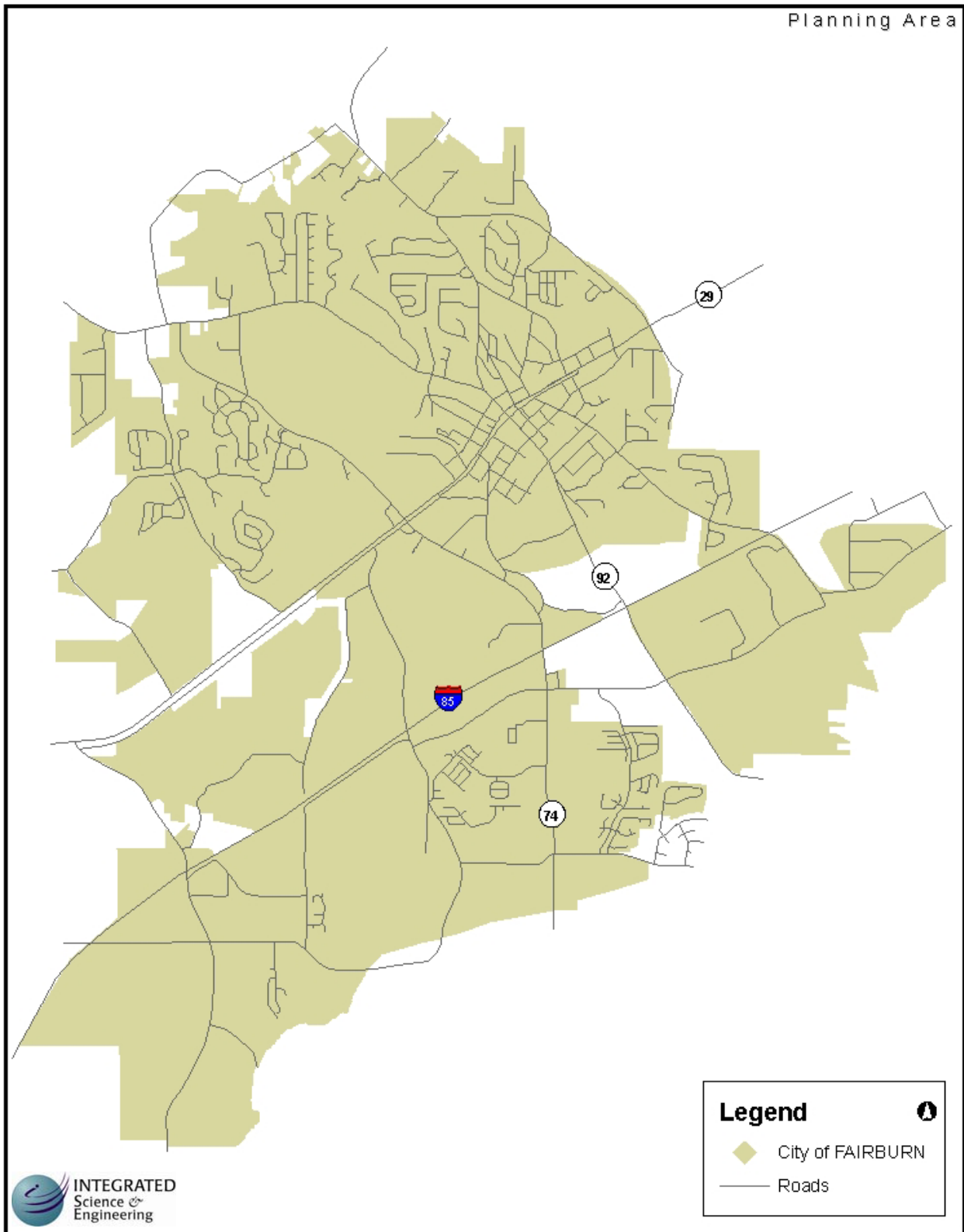


**Figure 2. Planning Area**

City of Fairburn

Solid Waste Management Plan

Planning Area



### 1.3 NATURAL RESOURCES

The City of Fairburn is approximately 10,797 acres and contains roughly 28 miles of streams and waterways. The City has 368 acres of designated greenspace and plans to set aside more land in the future. Four water supply watersheds intersect the City to the south and east totaling 6,716 acres. As a result, 62% of the City falls within a water supply watershed. Approximately 34% of the City is within a groundwater recharge zone. These zones account for 3,661 acres dispersed throughout the City. Approximately 220 acres of land in Fairburn are within the 100-year flood zone. The City also contains 450 acres of wetlands. Figure 4 in the Land Limitation section illustrates the natural resources in Fairburn.

### 1.4 POPULATION

Population growth in Fairburn has accelerated in recent years and is a driving factor behind many of the issues and policies outlined within this document. Since 1990, Fairburn’s population has increased at a more accelerated rate than populations in the County or State. South Fulton County is quickly becoming a focal point for new development. Table 1 below compares Fairburn, Union City and Palmetto with Fulton County to illustrate the comparably fast rate of growth in the southern part of the County.

*Table 1. Population Comparisons*

Jurisdiction	1980	1990	2000	2005	Chg '80 to '90	Chg '90-'00	Chg '00 to '05
Fairburn	3,466	4,013	5,464	10,310*	15.80%	36.20%	88.69%
Palmetto	2,086	2,612	3,400	3,729	25.22%	30.17%	9.7%
Union City	4,780	8,375	11,621	13,331	75.21%	38.76%	14.7%
Fulton County	589,904	648,951	816,006	872,532	10.00%	25.70%	6.9%

Source: Department of Community Affairs (DCA), US Census Bureau

\* Fairburn 2005 population projection calculated in the City of Fairburn’s Comprehensive Plan

In projecting the population over the planning period of the Solid Waste Management Plan, the City used the 2005 projected population number of 10,310, which was calculated as part of the Comprehensive Plan. Based on recent annexations, current and planned developments, the City of Fairburn expects an accelerated rate of growth over the next few years. The rate of growth will begin to level off during the 10-year planning period of the Solid Waste Management Plan. Table 2 below illustrates the projected population for the City of Fairburn for the 10-year planning period. The City used the 2005 projected population number of 10,310, which was calculated as part of the Comprehensive Plan.



*Table 2. Population Projections*

Year	Population
2007	13,135
2008	13,833
2009	14,531
2010	15,230
2011	15,610
2012	16,001
2013	16,401
2014	16,811
2015	17,231
2016	17,662
2017	18,103

## 1.5 SEASONAL POPULATION VARIATION

There are a number of seasonal events held in the City of Fairburn, but only one that has a significant impact on the overall population in the City. The Georgia Renaissance Festival is held in Fairburn from April thru June on an annual basis and brings in thousands of people each weekend during these months. The event takes place on Saturdays and Sundays during these months. Due to the limited availability of lodging in Fairburn, this event does not have a significant effect on the population of the City. There are a number of other events and venues that bring people to Fulton County. However, these attractions and events have little effect on the seasonal population in Fairburn.

The construction of hotels along the Highway 74 corridor is contributing to a slight increase in seasonal population in Fairburn. There are currently three hotels along this corridor with roughly 200 rooms and another 66 units currently under construction.

## 1.6 NUMBER OF HOUSEHOLDS

According to the U.S. Census, there were 1,879 households in Fairburn in the year 2000. The number of households in the City nearly doubled between the years 2000 to 2005. Table 3 compares the number of households in Fairburn and Fulton County between the years 2000 and 2005.

*Table 3. Number of Households*

Jurisdiction	2000	2005	Percent Change
City of Fairburn	1,879	3,643	93.9%
Fulton County	321,242	345,226	7.5%

Source: Department of Community Affairs (DCA), US Census Bureau, City Comprehensive Plan

## 1.7 ECONOMIC ACTIVITY

Table 4 provides a classification of employment in the City of Fairburn by type of industry. The percentage is calculated by the number of people employed by a particular industry versus the total civilian employed population. As the table demonstrates, the economy in Fairburn, as determined through the 2000 Census, is not dependant on any particular industry type and would therefore be less subject to downturns in a single industry. The major employers in Fairburn include: manufacturing, retail trade, transportation / warehousing / utilities, and health and educational services.

*Table 4. Types of Industries*

Type of Industry	2000	Percent
Total Employed Civilian Population	2,122	
Agriculture, Forestry, Fishing, Hunting & Mining	10	0.5%
Construction	147	6.9%
Manufacturing	327	15.4%
Wholesale Trade	61	2.9%
Retail Trade	243	11.5%
Transportation, Warehousing & Utilities	231	10.9%
Information	92	4.3%
Finance, Insurance & Real Estate	153	7.2%
Professional, Scientific, Management, Administrative & Waste Management Services	201	9.5%
Educational, Health & Social Services	242	11.4%
Arts, Entertainment, Recreation, Accommodation & Food Services	128	6.0%
Other Services	123	5.8%
Public Administration	164	7.7%

Source: Department of Community Affairs (DCA), US Census Bureau, City Comprehensive Plan

## 1.8 PUBLIC INVOLVEMENT DURING THE PLANNING PROCESS

The City of Fairburn exceeded the minimum requirements for Public Involvement set forth by the Department of Community Affairs by holding a total of four public meetings. The first public meeting was held in January 2007 to introduce the Plan and field questions about the process. Once the preliminary draft was completed, the Solid Waste Management Plan was presented to the Planning Board and to City Council to inform residents on the status of the Plan and to provide an opportunity for residents to make suggestions, additions, and revisions. The Plan was presented at a final public meeting on August 27, 2007 to ask the City Council to adopt a resolution authorizing the submittal of the draft plan.

In addition, the City used a number of other avenues to inform residents about the Plan throughout the process.

- Website. The City's website contains a page dedicated to the Solid Waste Management Plan. The page was updated on a regular basis and contains the draft plan and corresponding maps.
- Handouts. The City also produced a handout (available at City Hall) that provided general information about the Solid Waste Management Plan. The handout was also available at the public meetings.
- Advertising. Advertising for the public meetings was done in accordance with the City's policy for public meetings. Meeting agendas were made available to the public at least one week prior to the meetings.

A sample of public education materials is included in Appendix A.

---

## 2 WASTE DISPOSAL STREAM ANALYSIS

---

### 2.1 AMOUNT OF WASTE DISPOSED

The table below estimates the total amount of waste disposed of in the City of Fairburn by sector. The methodology used to generate the total tonnage of waste for both Municipal Solid Waste (MSW) and Construction and Demolition (C&D) landfills is based on the numbers used in the Solid Waste Management Plan for Fulton County 2005-2015. The tonnage for Fulton County was used to determine the percent by sector and applied to the City of Fairburn on a per capita basis. Using these numbers, it is estimated that approximately 40% of waste delivered to MSW landfills is generated by the residential sector. The second largest sector contributing waste to MSW landfills is the commercial sector, which accounts for roughly 27%. Industrial, C&D, and Sludge and Biosolids account for 14%, 12%, and 7% respectively.

*Table 5. Waste by Sector – City of Fairburn*

Sector	Tons to MSW Landfill		Tons to C&D Landfill	Total Tons	
Residential	4,922	40%		4,922	18%
Commercial	3,323	27%		3,323	13%
Industrial	1,723	14%		1,723	7%
C&D	1,477	12%	14,082	15,559	59%
Sludge & Biosolids	861	7%		861	3%
<b>Total</b>	<b>12,306</b>	<b>100%</b>	<b>14,082</b>	<b>26,388</b>	<b>100%</b>

Source: Solid Waste Management Plan for Fulton County 2005-2015

The methodology used to generate the total tonnage delivered to MSW and C&D landfills is discussed in greater detail below.

### 2.2 UNIQUE CONDITIONS AND/OR SEASONAL VARIATIONS

The City of Fairburn is host to the Georgia Renaissance Festival. This event is open Saturdays and Sundays for eight weeks and takes place from April through June. The Festival draws in approximately 250,000 visitors each year, which will increase the amount of waste disposed during this period.

The months during summer and fall typically result in an increase in yard trimmings and leaves that are disposed of in local landfills. In an effort to address this issue, the City conducts a monthly curbside yard waste collection. Yard waste is chipped onsite and residents are encouraged to reuse the material for landscaping and mulching. This program reduces the total tonnage of yard waste disposed of in landfills.

## 2.3 WASTE GENERATING DISASTER

A major disaster has the potential to result in a significant increase in the amount of waste disposed of on an annual basis. However, it is difficult to project the additional amount of waste that would be generated should such a disaster occur. The types of disasters most likely to occur in the City of Fairburn are hurricanes, ice storms, and major rain events. The City addresses their procedure for collection and disposal of waste resulting from disaster later in the report.

## 2.4 DISPOSAL RATE

Table 6 below compares the estimated disposal rate for the City of Fairburn with Fulton County as a whole. The City of Fairburn calculated the disposal rate by comparing the incorporated and unincorporated areas of the County. The population of the City (10,310) was divided by the total population in Fulton County (877,272) to determine the percentage of population that lives in Fairburn (0.0118). This number was multiplied by the total tonnage in the County (1,047,092) to determine the total tonnage per year for Fairburn (12,306). This number was converted from tons to pounds, divided by 365 and then divided by the population of Fairburn to determine the pounds per person per day (6.54). This number is consistent with the state average and better represents the per capita rate for the City. It should be noted that the table below is comparing numbers from the year 2005. The City of Fairburn used the 2005 population projection calculated as part of the Comprehensive Plan for this comparison.

*Table 6. MSW Disposal Rates – City of Fairburn*

Jurisdiction	Tons Per Year	Population	Per Capita (pounds per day)
Unincorporated Fulton County	512,751	244,447	11.49
Incorporated Fulton County	534,341	632,795	4.62
All of Fulton County	1,047,092	877,272	6.54
City of Fairburn	12,306	10,310	6.54

Source: Solid Waste Management Plan for Fulton County 2005-2015, City of Fairburn Comprehensive Plan

There is a significant difference when comparing the per capita numbers for the incorporated and unincorporated areas of the County. It is difficult to determine the exact tonnage for Fairburn because waste collectors contracted by the City and County do not differentiate loads based on jurisdictional boundaries. In many cases, loads being carried contain waste from more than one jurisdiction. As a result, the City of Fairburn opted to use the total number for all of Fulton County as the base disposal rate for the purposes of this report.

The City of Fairburn and Fulton County are exploring ways to better identify the source of waste being collected in the County and the methodology for which it is being reported. This may be a difficult task for the City because it will take a great deal of cooperation from waste haulers that service the City and may require them to alter the way waste gets reported at landfills.

The City of Fairburn used the same methodology discussed above to determine the disposal rate at C&D landfills. Based on this methodology, the City of Fairburn has an average of 7.48 pounds per person per day. The average disposal rate for the state of Georgia is 2.4 pounds per capita. The significantly higher disposal rate in Fairburn can be attributed to the large amount of growth and development within the City and the metropolitan Atlanta area. Based on numbers from the City’s Comprehensive Plan, the population in Fairburn nearly doubled between the years 2000 and 2005. It is projected that the City will continue to experience significant population growth throughout the planning period of this report.

*Table 7. C&D Disposal Rates – City of Fairburn*

Area	Tons Per Year	Population	Per Capita (pounds per day)
Total Tonnage in Fulton County	1,198,263.69	877,272	7.48
City of Fairburn	14,082.40	10,310	7.48

Source: Solid Waste Management Plan for Fulton County 2005-2015

## 2.5 PROGRESS TOWARD PER CAPITA REDUCTION OF MSW

In the 1992 Solid Waste Management Plan, there was no comprehensive data specific to the City with regard to the total quantity of waste disposed. However, the City has implemented a recycling program, collects yard trimmings, and participates in programs that aim to reduce the total amount of solid waste being disposed of in MSW landfills. It is likely that implementation and participation in these programs has lead to an overall reduction in MSW waste.

## 2.6 WASTE CHARACTERIZATION

The Georgia Statewide Waste Characterization Study conducted by R.W. Beck for the Department of Community Affairs (DCA) in 2005 breaks down the percentages by type of material disposed of in an MSW landfill for the Atlanta Regional Commission (ARC) Regional Development Center. The ARC encompasses a ten county area that includes Cherokee, Clayton, Cobb, DeKalb, Douglas, Fayette, Fulton, Gwinnett, Henry, and Rockdale Counties. The percentages developed through the DCA study were used to determine the estimated tons per year for the City of Fairburn.

*Table 8. Waste Composition Characterization of MSW Disposed*

Material	Average	Tons Per Year
Newspaper	4.9%	605.44
Corrugated Cardboard	11.3%	1,396.23
Office	3.5%	432.46
Magazine / Glossy	2.8%	345.97
Paperboard	3.5%	432.46
Mixed (other recyclable)	3.4%	420.10
Other (non recyclable)	10.6%	1,309.74
<b>Total Paper</b>	<b>40.0%</b>	<b>4,942.40</b>

<b>Material</b>	<b>Average</b>	<b>Tons Per Year</b>
#1 PET Bottles	1.3%	160.63
#2 HDPE Bottles	1.1%	135.92
#3 - #7 Bottles	0.2%	24.71
Expanded Polystyrene	1.4%	172.98
Film Plastic	7.5%	926.70
Other Rigid Plastic	4.3%	531.31
<b>Total Plastic</b>	<b>15.8%</b>	<b>1,952.25</b>
Clear	1.8%	222.41
Green	0.5%	61.78
Amber	1.2%	148.27
Other	0.3%	37.07
<b>Total Glass</b>	<b>3.8%</b>	<b>469.53</b>
Steel Cans	1.3%	160.63
Aluminum Cans	0.6%	74.14
Other Ferrous	3.0%	370.68
Other Non-Ferrous	0.6%	74.14
<b>Total Metal</b>	<b>5.6%</b>	<b>691.94</b>
Yard Waste	2.4%	296.54
Wood (non C&D)	1.8%	222.41
Food Waste	12.2%	1,507.43
Textiles	3.7%	457.17
Diapers	2.3%	284.19
Fines	2.7%	333.61
Other Organics	1.0%	123.56
<b>Total Organics</b>	<b>26.2%</b>	<b>3,237.27</b>
Drywall	0.5%	61.78
Wood	2.2%	271.83
Inerts	0.2%	24.71
Carpet	1.8%	222.41
Other C&D	0.8%	98.85
<b>Total C&amp;D</b>	<b>5.5%</b>	<b>679.58</b>
Televisions	0.0%	0.00
Computers	0.1%	12.36
Other Electronics	1.7%	210.05
Tires	0.3%	37.07
HHW	0.5%	61.78
Other Inorganics	0.6%	74.14
<b>Total Inorganics</b>	<b>3.2%</b>	<b>395.39</b>
<b>TOTAL</b>	<b>100.0%</b>	<b>12,306.00</b>

Source: Solid Waste Management Plan for Fulton County 2005-2015

The City of Fairburn has adopted an ordinance requiring residents to recycle glass, newspapers, magazines, aluminum, and tin. Every resident in the City is required to subscribe to the recycling service. However, the City does not currently have a methodology in place for policing participation.

The implementation of this recycling program should result in slightly lower percentages in the paper, glass, and metals categories. The City also collects yard trimmings and has drop-off locations for electronics in various areas around the City. These programs are discussed in greater detail in the sections below.

## 2.7 PROJECTION OF WASTE TO BE DISPOSED

Fulton County has established a goal of 10% waste reduction over the next ten years. The City of Fairburn used the estimated 6.54 pounds per person per day to project the total tonnage of waste to be disposed of over the 10-year planning period. The City intends to be consistent with the County goal and will achieve the 10% reduction by reducing total waste disposed of per capita by 1% per year which equates to 0.065 pounds per person per day. The projected tonnage based on this goal is shown in the table below. It is estimated that 197,287 tons of waste from the City of Fairburn would be disposed of in MSW landfills over the next ten years.

*Table 9. MSW Disposal Projections*

Year	Population	Total Tons	Per Capita (pounds per day)
2007	13,135	15,677	6.54
2008	13,833	16,334	6.47
2009	14,531	16,999	6.41
2010	15,230	17,622	6.34
2011	15,610	17,891	6.28
2012	16,001	18,134	6.21
2013	16,401	18,408	6.15
2014	16,811	18,653	6.08
2015	17,231	18,931	6.02
2016	17,662	19,179	5.95
2017	18,103	19,459	5.89

Source: City of Fairburn



---

## **3 WASTE REDUCTION ELEMENT**

---

### **3.1 INVENTORY & ASSESSMENT OF WASTE REDUCTION PROGRAMS**

#### **3.1.1 Source Reduction Programs**

The City of Fairburn encourages source reduction through various educational programs and workshops. Source reduction refers to the actions and programs the City has in place to reduce the amount of waste generated by the consumer. The local cable channel is used as a means for advertising the various programs available to residents. The City also participates in Keep South Fulton Beautiful (KSFB). This group is the local affiliate to the Keep America Beautiful program and provides information with regard to solid waste, waste reduction, and litter prevention. The City of Fairburn holds a Great American Cleanup event. This month-long event asks volunteer groups to pick up litter in their neighborhoods and around the City. Section 7 includes a more detailed discussion of the various education programs in the City.

#### **3.1.2 Recycling Programs & Facilities**

The City of Fairburn's Code of Ordinances, Chapter 19B-7 discusses the mandatory recycling program for residential units. The Ordinance is included in Appendix B. The ordinance calls for the recycling of glass, newspaper, magazines, plastics (PET and HDPE), aluminum, and bi-metal cans. The City has contracted with CLM Sanitation to pick up recyclables on a weekly basis from every City resident. To date, documentation is not reported with regard to the amount and/or distribution of the various recyclables collected. The City is trying to establish an arrangement with CLM Sanitation in which materials collected can be reported to the City on a monthly or quarterly basis. Materials collected by CLM Sanitation as part of the recycling program are taken to DRG, Inc. located on Fulton Industrial Boulevard in Atlanta.

Commercial recycling is handled by Advanced Disposal. Participation in recycling for businesses within the City is voluntary. Businesses electing to take part in recycling are required to contact Advanced Disposal and make arrangements. The City does not currently police the commercial recycling, nor does the City have records of businesses that subscribe to the recycling program offered by Advanced Disposal.

Currently, there are not any drop-off locations or other facilities that accept recyclable materials within the city limits. However, there are drop-off locations, composting, and other recycling facilities in Fulton County available to residents of Fairburn.

The Merk Miles Residential Drop-off Center is located in the City of College Park, which is approximately ten miles from Fairburn. The facility is County owned (privately operated) and is open to the entire County. Some of the recyclables accepted at this facility include metal, steel, cans, plastics, cardboard, newspaper, and phone books. The Merk Miles facility also accepts bulk waste, yard waste, and appliances.

*Table 10. Recycling Programs*

<b>Recycling Programs</b>	<b>Operator</b>
Curbside Collection	CLM Sanitation
Drop-off Center	Merk Miles

The City of Fairburn participates in the Keep Georgia Beautiful Christmas tree recycling program called “Bring One for the Chipper.” Citizens are encouraged to bring Christmas trees to the Fairburn Public Works building to be recycled. The mulch generated from these trees has been used for playgrounds, local government beautification projects, and individual yards. Citizens who participate in the “Bring One for the Chipper” program receive a free seedling.

### **3.1.3 Yard Trimmings Programs & Facilities**

The City arranges for a yard waste collection program that consists of curbside pickup. The City currently contracts with CLM Sanitation. Citizens are required to schedule an appointment with CLM Sanitation and yard waste is to be placed near the curb for pickup. This collection is conducted on a weekly basis. Yard waste is to be separated from regular household garbage to allow for recycling and to reduce the waste stream.

The City also collects yard trimmings from households in the City as needed. Generally, the City will pick up yard trimmings in the event that the trimmings have been missed by CLM. Yard trimmings are picked up by City staff and residents are charged based on the volume of the load. In addition to this service, the City is going to begin offering a free seasonal yard trimmings pickup. This service will be conducted three times a year; once in the spring and twice in the fall. This service will give residents the opportunity to recycle yard trimmings for no cost at the beginning and end of the busy season.

### **3.1.4 Special Materials Recycling**

The City is contracted with CLM for the pick up of white goods and electronics. Residents are required to set up an appointment with CLM for pick up of these items. Residents can also contact the City directly and set up an appointment for pickup of white goods and electronics.

The City of Fairburn holds a Household Hazardous Amnesty Day. This event gives residents the option of dropping off household items such as paint, used batteries, used oil, used tires, etc. Citizens may also drop off a limited number of used tires. The event is held annually in May at the Public Works building.

### **3.1.5 Assessment of Current Waste Reduction & Recycling Programs**

Based on the City of Fairburn’s 1992 Solid Waste Management Plan, the focus of reduction was in the form of recycling. The main components of the reduction effort were in the residential recycling, commercial recycling, and yard trimmings / compost categories. The reduction effort also included a more proactive approach to public education. The City has implemented a mandatory recycling program for residential customers and conducts curb side pickup of yard

trimmings. The recycling program in the City went into effect on September 28, 1992. Educational programs exist in the form of monthly publications, utility bill inserts, and information posted to the City's website. While these programs will contribute greatly to waste reduction in the City, the expansion of these programs may be essential if the City is to meet their 10% reduction goal.

### **3.1.6 Needs & Goals**

The City of Fairburn aims to achieve a 10% per capita waste reduction over the planning period of this report. Accomplishing this goal will require the City to do the following:

- Provide drop-off locations for recyclables and/or bulk items
- Work with the private haulers to track and keep a better record of waste being generated in the City
- Ensure that the newly annexed areas in the City are part of the recycling and yard trimmings program
- Continue to implement the recycling program
- Encourage participation in recycling through public education
- Encourage source reduction through education
- Explore implementation of a rate structure program
- Encourage reduction of waste through composting
- Modify the yard trimming program during the renegotiation process with CLM Sanitation
- Implement a City program to recycle yard trimmings at the Enviro Recyclers facility
- Explore purchasing composting bins
- Work with CLM Sanitation to establish a recycling area

The City will continue to implement the mandatory recycling programs as the focus of their waste reduction efforts. The City will also continue to provide mulching and yard trimming services to residents.

---

## 4 COLLECTION ELEMENT

---

### 4.1 INVENTORY & ASSESSMENT OF COLLECTION PROGRAMS

The City of Fairburn provides curbside collection services to all residents within the City. This service is contracted to a private vendor and conducted on a weekly basis. Residents may also utilize private transfer stations and drop-off centers located in the City and County. Residents are billed for curbside collection services as part of the water utility bill.

The City has contracted with CLM Sanitation for all curbside collection services in the City. Contact information for CLM Sanitation is listed in Table 11 below. Once collected, residential solid waste is unloaded at Pine Ridge Regional Landfill, located in Griffin, Georgia. The Welcome All Transfer Station, located in College Park, Georgia, is also used to unload waste collected in the City.

*Table 11. City of Fairburn Waste Hauler*

Name of Hauler	Street Address	City	Phone Number	Service Provided
CLM Sanitation	3351 Hwy. 42	Stockbridge, GA 30281	(770) 474-9273	Residential & Commercial

Commercial collection in the City of Fairburn is arranged for by the City and conducted through Front Loader / Container Service by Advanced Disposal. Collection is handled two days a week and customers are billed as part of the water utility bill. Collected commercial waste is transported to the Welcome All Transfer Station and eventually disposed of at Richland Creek in Buford, Georgia.

The City also provides a curbside recycling service to residents. Residential recycling is collected by CLM Sanitation on a weekly basis and is available to all City residents. Commercial recycling in the City is offered by Advanced Disposal. Businesses are required to contact Advanced Disposal and make arrangements for recyclables to be collected.

### 4.2 DROP-OFF LOCATIONS & TRANSFER STATIONS

Residents in the City of Fairburn may also choose to deliver solid waste to various transfer stations that operate in the County. The Merk Miles drop-off center accepts household garbage, scrap metal, recyclables, bulk items, and yard waste. The Welcome All Transfer Station, which is a privately owned facility located in College Park, accepts residential household garbage.

### 4.3 YARD TRIMMINGS & BULK ITEM COLLECTION

Yard trimmings are collected by a private hauler contracted by the City. The City arranged for this service to be performed by CLM Sanitation and is available to residents on an appointment basis. Acceptable yard waste includes grass clippings, leaves, shrubs, brush, tree trimmings, and other vegetative materials generated from general maintenance of yards, lawns, and landscaping.

Yard waste collected is taken to SafeGuard C&D Landfill for disposal. The City also provides yard waste collection on a seasonal routine or by appointment. Yard waste collected by the City is processed at Enviro Recyclers on Bohannon Road. The general method for processing yard waste at this facility is grinding and chipping for compost.

Bulk item collection is performed by CLM Sanitation on an appointment basis only. Bulk items are objects such as white goods, furniture, electronics, appliances, and other items too large to be collected as part of routine collection efforts. Citizens are required to schedule an appointment with CLM Sanitation and are charged a set rate per item. Citizens can also contact the City to set up an appointment for collection of bulk items.

In addition, transfer stations and drop-off locations are available for citizens to dispose of yard waste and bulk items. Citizens are charged a flat rate per item for bulk items and charged based on the volume of yard waste.

*Table 12. Collection Programs*

Type of Collection	Name / Operator	Sector	Contractual Arrangement
Curbside Collection (weekly garbage collection)	CLM Sanitation	Residential	Residents charged as part of utility bill
Curbside Collection (yard trimmings)	CLM Sanitation	Residential	Residents must schedule appointment and are charged based on volume
Curbside Collection (yard trimmings)	City of Fairburn	Residential	Residents must schedule appointment and are charged based on volume
Commercial Collection (front loader/container service)	Advanced Disposal	Commercial	Charged as part of utility bill
Drop-off Center	Merk Miles	Residential / Commercial	Charged based on volume
Transfer Station	Welcome All	Residential / Commercial	Charged based on volume
Transfer Station / Drop-off	Enviro Recyclers	Residential / Commercial	Charged based on volume

#### **4.4 ILLEGAL DUMPING / LITTERING**

The City of Fairburn has certain areas where illegal dumping occurs, typically in the form of bulk items such as couches, appliances, etc. This type of illegal dumping is generally found on dirt and gravel roads in close proximity to the large tracts of undeveloped land in the City. The City of Fairburn has a Litter Control Ordinance that prohibits illegal dumping and littering. Defined in the Ordinance are the types of violations, enforcement action, and penalties. The City exercises the power of Code Enforcement to enforce illegal dumping and littering in the City. Any person in violation of the Ordinance may be fined no less than \$200 and not more than \$1,200. In addition, the violator may be required to reimburse the City for the reasonable cost of removing the litter.

Small scale littering in the more developed areas of the City is not perceived to be a significant concern. However, street sweeping is conducted by the City on a regular basis to clear out any residual litter on City streets. Periodic litter pickup is also performed by the City using Public Works employees, volunteer groups, and community service labor.

The City of Fairburn is a member of KSFB. This group has a number of public education efforts to address and minimize littering and illegal dumping. The City holds an annual drop-off day to provide assistance to residents wishing to get rid of bulk trash items. The City also includes educational information in utility bill inserts and in the monthly "*Fairburn Focus*" publication. Citizens are encouraged to call the City Public Works Department in the event they are witness to illegal dumping and/or littering.

#### **4.5 ADEQUACY OF COLLECTION PROGRAMS**

The City of Fairburn nearly tripled in both size (area) and population since the 1992 Solid Waste Management Plan. Although there is an increasing population, the City's goal remains the same: providing consistent and efficient collection services to residents of the City. The City has contracted operation of the collection service of waste, bulk items, and recyclables to CLM Sanitation. CLM Sanitation continues to provide these services to all citizens of Fairburn in a cost effective and resourceful manner. The collection services administered by the City will ensure that sufficient services are provided to all residents in the City throughout the course of this planning period. It is important for the City to educate residents with regard to recycling and mulching programs in order to meet the City's 10% waste reduction goal for the 10-year planning period of this report.

#### **4.6 CONTINGENCY STRATEGY**

There are a number of private haulers that operate in the vicinity of the City of Fairburn. The City would have the opportunity to contract with one of these other companies should a situation arise where CLM Sanitation can no longer provide service to residents.

In the event of a major disaster, the City is working to adopt the Georgia Emergency Management Agency (GEMA) Debris Management Plan. This program provides assistance to local jurisdictions in the event of a declared disaster.

The City has fleet vehicles available in the event of a major disaster and if circumstances prevent CLM from conducting collection. These vehicles would be used to remove debris from high priority areas such as roadways and areas where debris is posing an immediate threat to public health and safety. The City would also use the fleet vehicles for routine collection until other arrangement could be made. The City estimates a one week timeframe for implementing this type of action. If necessary, the City may hire additional private haulers on a temporary basis until the situation is under control.

#### **4.7 NEEDS & GOALS**

The City of Fairburn's goal is to provide consistent and efficient collection services to all residents in the City. In order to meet this goal the City has the following needs:

- Work with private haulers to ensure steady and reliable collection
- Evaluate and implement the GEMA Debris Management Plan for disaster planning
- Continue to enforce the Litter Ordinance to address illegal dumping; and evaluate to ensure penalties are consistent in meeting the City's goals

---

## 5 DISPOSAL ELEMENT

---

### 5.1 INVENTORY & ASSESSMENT OF FACILITIES LOCATED IN THE CITY

### 5.2 LANDFILLS

MSW collected in the City is transported to the Pine Ridge Regional Landfill, located at 105 Bailey Jester Road in Griffin, Georgia. This facility is privately owned and operated.

According to the EPD database, there are two landfills operating in close proximity to the City of Fairburn. The SafeGuard Landfill, located at 6895 Roosevelt Highway, falls within the city limits. Willow Oak C&D Landfill, located at 7395 Roosevelt Highway, is just west of the City. Both facilities are C&D landfills and are privately operated. CLM Sanitation collects waste in the City of Fairburn and C&D waste is transported to SafeGuard. There are no landfills owned or operated by the City. Table 13 below identifies the MSW and C&D landfills used by the City.

*Table 13. Landfills*

Facility Name	Facility Type Description	Permit Number	Dominion	Mailing Address	City	State
Safeguard Landfill Management C&D	C&D	060-088D (C&D)	Private	6895 Roosevelt Hwy	Fairburn	GA
Willow Oak C&D Landfill	C&D	060-089D (C&D)	Private	7395 Roosevelt Hwy	Fairburn	GA
Pine Ridge Regional Landfill	MSW	018-008D (MSWL)	Private	105 Bailey Jester Rd	Griffin	GA

Source: Environmental Protection Division (EPD)

Figure 3 below illustrates the locations of landfills, transfer stations, recycling centers, and closed landfills within close proximity to the City of Fairburn.

### 5.3 TRANSFER STATIONS

According to the EPD database, there are five transfer stations that operate in close proximity to the City of Fairburn. The Welcome All Transfer Station is a privately operated facility located in College Park, Georgia and is used by the City. The Enviro Recyclers facility, located on Bohannon Road in Fairburn, handles recycling, mulching, and composting. These transfer stations and permit numbers are listed in Table 14 below.



*Table 14. Transfer Stations*

Facility Name	Permit Number	Status	Facility Type Description	Waste Description
Philip Services Corp/AllWaste Recovery System	PBR-060-212TS	Operating	TS	Transfer Non-Hazardous Waste For Disposal
Soful, LLC Transfer Station	PBR-060-223TS	Operating	TS	MSW and C&D Wastes Transfer
Tall Pines Solid Waste Transfer Station	PBR-06-222TS	Operating	TS	Transfer MSW, C&D Transfer
Welcome All Transfer Station	PBR-060-216TS	Operating	TS	Residential & Commercial Garbage
Enviro Recyclers	Unconfirmed	Operating	TS	Recycling, Composting, Mulching

The Philip Services Corp / AllWaste Recovery System operates as a transfer station of non-hazardous waste for disposal. Soful and Tall Pines both transfer MSW and C&D wastes.

#### **5.4 INVENTORY & ASSESSMENT OF DISPOSAL FACILITIES USED BY THE CITY**

MSW collected in the City of Fairburn is disposed of at the Pine Ridge Regional Landfill. The Pine Ridge Regional Landfill is projected to have capacity throughout the course of this planning period.

C&D waste generated and collected in the City of Fairburn is disposed of at the SafeGuard C&D Landfill. SafeGuard is in the process of expanding and will have done so during the 10-year planning period of this report. As a result, SafeGuard should have adequate space for the City's disposal of C&D waste. Having an established contract with a private hauler, it is difficult for the City to determine where C&D waste will be disposed for the City. It is generally the responsibility of the private hauler to find an adequate location for disposal. The Willow Oak C&D Landfill, located just outside of the City, has additional capacity to accommodate and dispose of waste collected in Fairburn.

#### **5.5 ASSURANCE OF 10-YEAR CAPACITY**

The Pine Ridge Regional Landfill has given assurance to the City that they have the capacity to accept all MSW disposed of by the City throughout the course of the 10-year planning period. Included in Appendix C is a letter from the Pine Ridge Regional Landfill assuring capacity through the 10-year planning period.

## **5.6 CONTINGENCY STRATEGY**

There are a number of landfills within a close proximity to the City of Fairburn. In the event of a major disaster in which Pine Ridge was no longer able to accept waste, the City would dispose of waste at Richland Creek Landfill. This landfill is located on Richland Creek Road in Buford. The Richland Creek Landfill has the capacity to accommodate Fairburn. The City anticipates that there would be a seamless transition in disposal from the perspective of residents since CLM Sanitation (or the contracted waste collection company) would still be responsible for collection within the City. However, the City would make this transition in less than one collection cycle. Information would also be posted to the City's website and on the local cable channel to inform residents about the change in service.

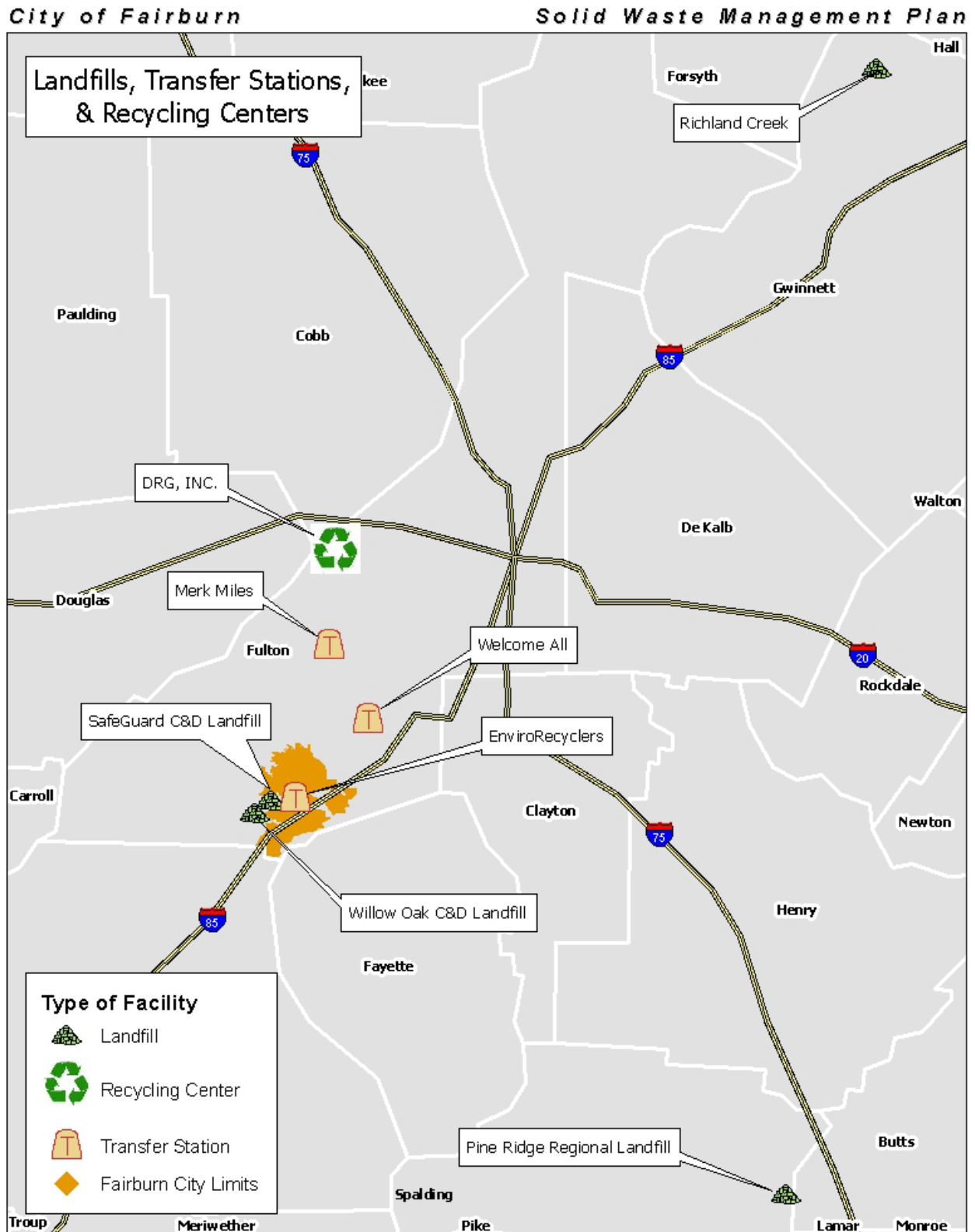
The Richland Creek Landfill would also be utilized by the City in any event that Pine Ridge no longer had the capacity to accept waste from Fairburn. This approach discussed above would be applied to this situation with the expectation that collection would not be interrupted.

## **5.7 NEEDS & GOALS**

The principal goal with regard to waste disposal in the City is to ensure there is sufficient capacity to handle the projected waste for the planning period of this report. To achieve this, the City has the following needs:

- Ensure space is available in local landfills for MSW generated in the City
- Confirm that private haulers contracted by the City are following the goals set forth in this Plan

Figure 3. Landfills, Transfer Stations & Recycling Centers



---

## **6 LAND LIMITATION ELEMENT**

---

There are a number of different factors that must be taken into consideration when selecting a suitable site for development of new landfills and/or other waste handling facilities. Demographic factors, land use factors, and environmental factors collectively place limitations and pose challenges with regard to finding an appropriate site.

Sites selected for landfills and other related facilities should not diminish the overall quality of life for residents in a community. These sites should also have a minimal impact on the natural environment. The factors discussed in this section are not designed to prohibit development within any of these areas. Rather, this discussion is included to provide guidance and consideration in an effort to minimize the adverse effects that could result from selecting a site.

### **6.1 NATURAL & ENVIRONMENTAL LIMITATIONS**

This section discusses some of the restrictions with regard to where a solid waste facility can be located within the City based on federal, state, and local policy. The items discussed in this section are illustrated in Figure 4.

#### **6.1.1 Water Supply Watersheds**

*“DNR Rule 391-3-16-.01(7)(c)1 requires that at any location within a small water supply watershed, new solid waste landfills must have synthetic liners and leachate collection systems.”*

The City of Fairburn is intersected by the Flint River Basin, which accounts for 6,716 acres in the City. Applicable DNR rules relating to water supply watersheds will be considered during the site selection process.

#### **6.1.2 Groundwater Recharge Areas**

*“DNR Rule 391-3-16-.02(3)(a) requires that in significant groundwater recharge areas, DNR shall not issue permits for new solid waste landfills not having synthetic liners and leachate collection systems.”*

Roughly one-third (3,661 acres) of the City falls within the boundaries of two groundwater recharge areas; one on the central east side of the City and the other on the south. DNR rules for groundwater recharge areas will be applied if the selected site falls within the boundaries of one of these areas.

### **6.1.3 Wetlands**

*“DNR Rule 391-3-16-.03(3)(e) establishes that solid waste landfills may constitute an unacceptable use of a wetland.”*

*“DNR Rule 391-3-4-.05(1)(e) prohibits the development of solid waste landfills in wetlands, as defined by the U. S. Army Corps of Engineers, unless evidence is provided by the applicant to EPD that use of such wetlands has been permitted or otherwise authorized under all other applicable state and federal laws and rules.”*

There are roughly 450 acres of wetlands within the City of Fairburn. Applicable DNR rules will be referenced and applicants will be required to obtain a Section 404 Permit prior to getting a Land Disturbance Permit.

### **6.1.4 River Corridors**

*“DNR Rule 391-3-16-.04(4)(h) prohibits the development of new solid waste landfills within protected river corridors.”*

The City of Fairburn does not contain, nor does it fall within the buffer of any protected river corridors.

### **6.1.5 Protected Mountains**

*“DNR Rule 391-3-16-.05(4)(l) prohibits the development of new solid waste landfills in areas designated as protected mountains.”*

There are no protected mountains in the City of Fairburn.

### **6.1.6 Floodplains**

*“DNR Rule 391-3-4-.05(1)(d) stipulates that any solid waste landfill located in the 100-year floodplain shall not restrict the flow of the 100-year flood, reduce the temporary water storage capacity of the floodplain, or result in a washout of solid waste so as to pose a threat to human health or the environment.”*

All applicants proposing development within the 100-year floodplain are required to obtain a Section 404 Permit prior to receiving a Land Disturbance Permit.

### **6.1.7 Fault Zones, Seismic Impact Zones & Unstable Areas**

An engineer (P.E.) or registered geologist is required to conduct a hydro-geological assessment at the proposed location of any new solid waste disposal facility. The potential for problems to result from development on fault zones, areas susceptible to seismic activity, and unstable ground are evaluated as part of this assessment. The DNR rules for each of these items are listed below.

*“DNR Rule 391-3-4-.05(1)(f) focuses on fault areas and requires that new landfill units and lateral expansions of existing landfills not be located within 200 feet of a fault that has had a displacement in Holocene time, unless an alternative setback distance of less than 200 feet will prevent damage to the structural integrity of the landfill and will protect human health and the environment.”*

*“DNR Rule 391-3-4-.05(1)(g) prohibits the development of new landfills and lateral expansions of existing landfills in seismic impact zones, unless all landfill containment structures, including existing landfill liners, leachate collection systems, and surface water control systems, are designed to resist the maximum horizontal acceleration in lithified earth material for the site.”*

*“DNR Rule 391-3-4-.05(1)(h), existing landfills and lateral expansions of existing landfills located in an unstable area must demonstrate that engineering measures have been incorporated into the landfill’s design to ensure that the integrity of the structural components of the landfill will not be compromised.”*

### **6.1.8 Significant Groundwater Recharge Areas**

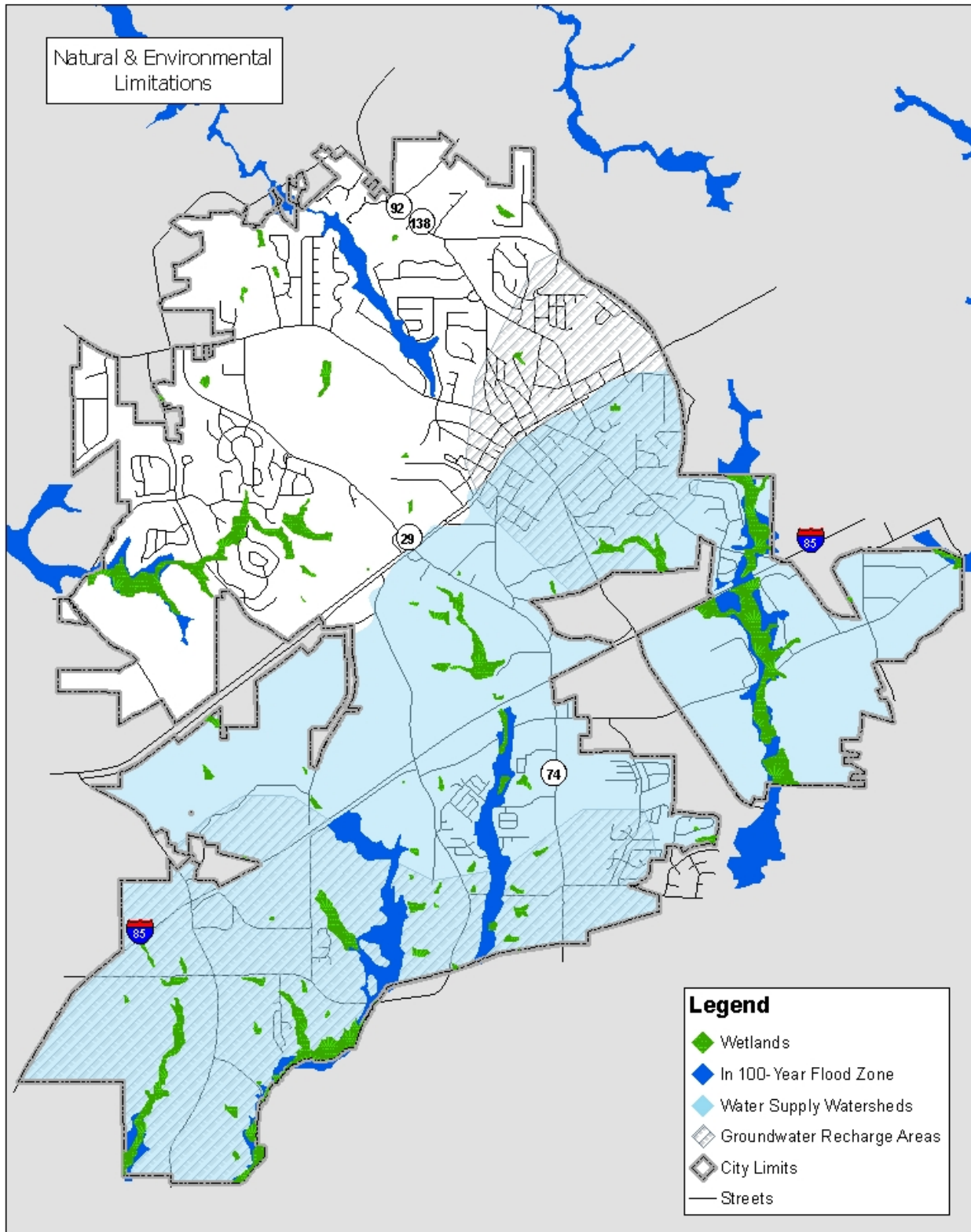
*“DNR Rule 391-3-4-.05(1)(j) requires new solid waste landfills or expansions of existing facilities within two miles of a significant groundwater recharge areas to have liners and leachate collection systems, with the exception of facilities accepting waste generated from outside the county in which the facility is located. In that case, the facility must be totally outside of any area designated as a significant groundwater recharge area.”*

Roughly one-third (3,661 acres) of the City falls within the boundaries of two groundwater recharge areas; one on the central east side of the City and the other on the south. DNR rules for significant groundwater recharge areas will be applied if a selected site falls within the boundaries of this type of area.

Figure 4. Natural & Environmental Limitations

City of Fairburn

Solid Waste Management Plan



## **6.2 LAND USE & ZONING LIMITATIONS**

### **6.2.1 Zoning Restrictions**

*“DNR Rule 391-3-4-.05(1)(a) requires that the site must conform to all local zoning/land use ordinances, and that written verification of such be submitted to EPD.”*

The City of Fairburn’s Zoning Ordinance currently prohibits the development of MSW, and C&D landfills or waste transfer stations except for those properties in the M-2 district, zoned specifically for use as a construction and demolition debris landfill, and annexed between 2004 and 2007.

### **6.2.2 National Historic Sites**

The City of Fairburn contains three nationally registered historic resources. The John F. Beavers House is located north west of Fairburn off of Georgia Highway 92 and was added to the National Registry in 1984. The Campbell County Courthouse is located at the intersection of East Broad and Cole Streets and was added in 1976. Lastly, the Fairburn Commercial Historic District was added to the National Registry in 1988 and extends along West Broad Street from Smith Street to Dodd Street.

MSW landfills are not permitted within 5,708 yards of a National Historic Site. Nationally listed resources in the City of Fairburn are illustrated in Figure 5.

### **6.2.3 Airport Safety**

*“DNR Rule 391-3-4-.05(1)(c) requires that new solid waste landfill units or lateral expansions of existing units shall not be within 10,000 feet of any public use or private use airport runway end used by turbojet aircraft or within 5,000 feet of any public use or private use airport runway end used by only piston type aircraft.”*

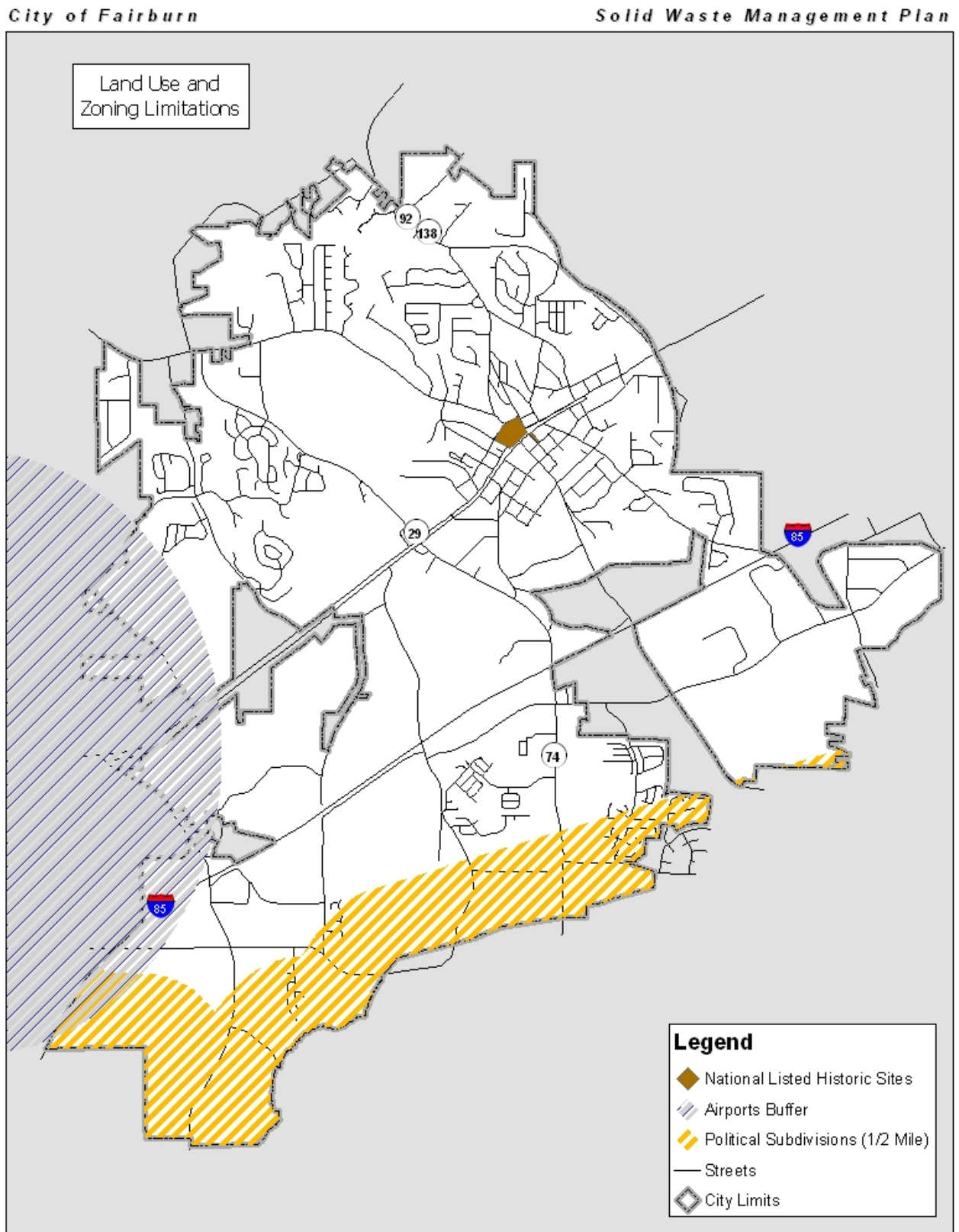
The South Fulton Airport in the City of Palmetto is just west of Fairburn. This facility allows piston type aircraft with the intention of expanding to allow for turbo-jet engines. As a result, an MSW landfill is not permitted within 10,000 feet from the runways of this facility. Land within the City of Fairburn affected by this constraint is illustrated in Figure 5.

### **6.2.4 Political Subdivisions**

According to the Georgia Comprehensive Solid Waste Management Act, it is prohibited to develop an MSW landfill within one half mile of an adjacent County’s border without the approval of the governing authority. The City of Fairburn borders two other counties to the south; Coweta County to the southwest and Fayette County to the southeast. As a result, approximately 1,500 acres or 2.4 square miles of land in the City are affected by this law.



Figure 5. Land Use & Zoning Limitations



### 6.3 PLAN CONSISTENCY

Prior to the EPD issuing a permit for a new solid waste handling facility the facility or facility expansion must be consistent with the City's Solid Waste Management Plan. The City will use the following to determine if a proposed facility is consistent with the City's Solid Waste Management Plan as well as the community vision as defined in the City's Comprehensive Plan.

It will be the responsibility of the site owner/operator to submit a written document to the City 60 days prior to filing for a solid waste handling permit. In short, the document must address (1) how the proposed facility meets the goals and objectives identified in the City's Solid Waste Management Plan and (2) the impact the facility will have on the community. These items and the other requirements are listed below.

1. Any proposed facility shall meet the specific goals identified in the Solid Waste Management Plan, specifically the impact on collection, disposal, and existing reduction and recycling efforts in the City.
2. Any proposed facility and its operations plan shall minimize its impact on the community according to the following areas:
  - a. Transportation. The impact to vehicle traffic and public safety around the proposed facility and throughout the City shall not reduce the level of service by more than one letter for all roadways and intersections within 2,000 feet (without improvements).
  - b. Natural & Cultural Resources. The impact of the facility to natural and cultural resources in the City not already covered shall be minimized to the greatest extent practicable.
  - c. Rates. The impact to residential and commercial solid waste management rates shall not cause an increase in collection or disposal rates.
3. Any proposed facility shall provide financial assurance to address potential environmental issues.
4. Any proposed facility shall meet the geographic site limitations defined in this Solid Waste Management Plan.
5. Any proposed facility shall be an allowable use based on existing zoning.

Fairburn City Council will hold at least one public hearing on the proposed facility to get feedback from City residents. Based on the results of the initial public hearing, City Council can decide whether additional public meetings are necessary. Following the public meeting(s), the City Council will evaluate the proposed facility and all related documentation for consistency with the Solid Waste Management Plan and goals established in the Comprehensive Plan. The applicant will be notified within 30 days regarding the status of the review. City Council will either determine that the proposed facility is consistent with the Solid Waste Management Plan or document any inconsistencies. The applicant will have the opportunity to address any

inconsistencies and resubmit the application to City Council for review. Once a proposed facility is considered acceptable by the City, the Council will issue a letter to the applicant stating the facility is consistent with the Solid Waste Management Plan.

#### **6.4 NEEDS & GOALS**

The primary goal for the City of Fairburn with regard to land is to make certain that the development of any type of waste handling facility is done in a manner that does not compromise public health and the environment. To achieve this, the City has the following needs:

- Utilize the Solid Waste Management Plan to ensure potential facilities are sited and operated in a manner that is consistent with the Plan
- Maintain maps with regard to the environmental, land use, and zoning limitations identified in the City
- Ensure that all siting requirements for solid waste facilities are enforced in a manner that is consistent with the Solid Waste Management Plan
- Ensure that any new facilities are compliant with state and federal regulations as well as jurisdictional requirements.

---

## 7 EDUCATION & PUBLIC INVOLVEMENT ELEMENT

---

### 7.1 INVENTORY & ASSESSMENT OF PUBLIC EDUCATION & INVOLVEMENT

The City of Fairburn uses a number of different programs and resources to educate residents of Fairburn and to encourage public involvement. The City produced informational handouts/newsletters and also has information available on the City's website to educate residents.

The City of Fairburn is a member of the KSFB organization. This non-profit organization offers education and involvement programs to residents and businesses in South Fulton County. KSFB coordinates and hosts a number of different events throughout the year. The group also provides resources for school teachers that meet the core curriculum standards set forth by the Georgia Department of Education. Fairburn contributes resources, participates actively in events, and is represented at monthly KSFB meetings by City staff, but does not contribute money to the organization.

Table 15 below identifies the public education and involvement programs available in the City as well as the schedule and/or frequency of production.

*Table 15. Public Education & Involvement Programs*

<b>Program</b>	<b>Description</b>	<b>Responsible Party/Organization</b>	<b>Schedule / Frequency</b>
Newsletter (Fairburn Focus)	Article provides information about City services, waste reduction, upcoming events, recycling programs, yard trimming pickup, litter prevention, illegal dumping, etc.	City Staff	Monthly
Bring One for the Chipper	This program is a Christmas tree recycling program. Trees are mulched at the Public Works building and used at playgrounds and other City properties. Residents who bring their Christmas tree receive a free sapling.	City & KSFB	Annually (January)
Household Hazardous Amnesty Day	This program gives residents the opportunity to drop off hazardous materials such as batteries, tires, paint cans, etc. for recycling.	City & KSFB	Annually
Great American Cleanup Event	This month-long event asks residents to volunteer and pick up trash in their neighborhoods and other places around the City.	City Staff	Annually

Program	Description	Responsible Party/Organization	Schedule / Frequency
Website	The City's website contains information about trash collection, recycling, yard trimming pickup, and other services offered by the City. The website also contains a form and Hotline to report littering, illegal dumping, etc.	City Staff	Ongoing
Utility Bill Inserts	Inserts are put into utility bills that educate residents about littering, illegal dumping, and other solid waste related issues.	City Staff	Annually
Informational Brochures	Brochures provide information about City services, waste reduction, upcoming events, recycling programs, yard trimming pickup, litter prevention, illegal dumping, etc.	City Staff	Ongoing
Public Service Announcements (PSAs)	These announcements are placed on the local cable channel and provide information to residents about various topics related to City services including solid waste.	City Staff	
Adopt-A-Road	This program keeps highways and roads clean by getting volunteers to conduct litter cleanup on a regular basis.	KSFB	
Project Learning Tree	This program is an environmental education program for teachers and students.	KSFB	

## 7.2 NEEDS & GOALS

The main goal regarding education and public involvement in the City is to inform residents of services related to reduction, recycling, and collection of waste. Achieving this goal requires the City to do the following:

- Provide information to residents about services via handouts at public buildings and posting information to the City's website
- Work with non-profit groups such as KSFB and Clean Water Campaign to educate and involve residents in waste management programs
- Continue to provide information in newsletters and flyers promoting recycling, mulching, yard trimming programs, and other waste reduction programs
- Join the Governor's Litter Initiative "Litter. It Costs You" campaign

## 8 IMPLEMENTATION STRATEGY

### 8.1 SUMMARY OF NEEDS & GOALS

The needs and goals identified in the waste reduction, collection, disposal, land limitations, and public education and involvement sections are summarized below.

<b>Waste Reduction</b>	
Goal	To achieve a 10% per capita waste reduction over the planning period of this report
Needs	<ul style="list-style-type: none"> <li>• Provide drop-off locations for recyclables and/or bulk items</li> <li>• Work with the private haulers to track and keep better records of waste being generated in the City</li> <li>• Ensure that the newly annexed areas in the City are part of the recycling and yard trimmings program</li> <li>• Continue to implement the recycling program</li> <li>• Encourage participation in recycling through public education</li> <li>• Encourage source reduction through education</li> <li>• Explore implementation of a rate structure program</li> <li>• Encourage reduction of waste through composting</li> <li>• Modify the yard trimming program during the renegotiation process with CLM Sanitation</li> <li>• Implement a City program to recycle yard trimmings at the Enviro Recyclers facility</li> <li>• Explore purchasing composting bins</li> <li>• Work with CLM Sanitation to establish a recycling area</li> </ul>
<b>Collection</b>	
Goal	To provide consistent and efficient collection services to all residents in the City
Needs	<ul style="list-style-type: none"> <li>• Work with private haulers to ensure steady and reliable collection</li> <li>• Evaluate and implement the GEMA Debris Management Plan for disaster planning</li> <li>• Continue to enforce the Litter Ordinance to address illegal dumping</li> <li>• Evaluate program to ensure penalties are consistent in meeting the City's goals</li> </ul>
<b>Disposal</b>	
Goal	To ensure there is sufficient capacity to handle the projected waste for the City
Needs	<ul style="list-style-type: none"> <li>• Ensure space is available in local landfills for MSW generated in the City</li> <li>• Confirm that private haulers contracted by the City are following the goals set forth in this Plan</li> </ul>
<b>Land Limitation</b>	
Goal	To make certain that development of any waste handling facility is done in a manner that does not compromise public health and the environment
Needs	<ul style="list-style-type: none"> <li>• Utilize the Solid Waste Management Plan to ensure potential facilities are sited and operated in a manner that is consistent with the Plan</li> <li>• Maintain maps with regard to the environmental, land use, and zoning limitations identified in the City</li> <li>• Ensure that all siting requirements for solid waste facilities are enforced in a manner that is consistent with the Solid Waste Management Plan</li> <li>• Ensure that any new facilities are compliant with state and federal regulations</li> </ul>

Public Education & Involvement	
Goal	To make sure residents are aware of services related to reduction, recycling, and collection of waste
Needs	<ul style="list-style-type: none"> <li>• Make information available to residents about services via handouts at public buildings and posting information to the City's website</li> <li>• Work with non-profit groups such as KSFB and Clean Water Campaign to educate and involve residents in waste management programs</li> <li>• Continue to provide information in newsletters and flyers promoting recycling, mulching, yard trimming programs, and other waste reduction programs</li> <li>• Join the Governor's Litter Initiative "Litter. It Costs You" campaign</li> </ul>

## 8.2 IMPLEMENTATION STRATEGY

This section identifies the specific tasks/activities, timeframe for implementation, responsible party, estimated costs and funding source for the items identified in this report. The short-term work program is defined as the first five years of the implementation strategy and is designed to ensure that the City moves forward with the goals and more specifically, the projects identified in this plan. The short-term work program will be submitted to the DCA every 5 years to demonstrate that the City has implemented the tasks outlined below.

*Table 16. Implementation Strategy*

Project	Year Started											Year Completed	Cost Estimate	Funding Sources	Responsible Party	
	2007	2008	2009	2010	2011	2012	2013	2014	2015	2016	2017					
<b>Waste Reduction</b>																
Work with contracted haulers to develop a way to better record waste collected in Fairburn		X	X	X	X	X	X	X	X	X	X	X	Ongoing	Staff Time	Sanitation Enterprise Fund	Public Works Director (PWD)
Require SW Minimization Plan with new development permits or business licenses		X	X	X	X	X	X	X	X	X	X	X	Ongoing	Staff Time	Sanitation Enterprise Fund	PWD
Write in future contracts to require waste haulers and other facilities to record monthly quantities of waste from Fairburn	When Contract is Up												Staff Time	Sanitation Enterprise Fund	PWD	
Ensure that yard trimmings and recycling program are available to residents in newly annexed areas of the City	X	X	X	X	X	X	X	X	X	X	X	X	Ongoing	Staff Time	General Fund	PWD
Explore opportunities for the City to provide drop-off locations for recyclables and bulk items	X	X	X	X	X	X	X	X	X	X	X	X	Ongoing	Staff Time	General Fund	PWD

Project	Year Started											Year Completed	Cost Estimate	Funding Sources	Responsible Party	
	2007	2008	2009	2010	2011	2012	2013	2014	2015	2016	2017					
Modify the yard trimming program during renegotiation process with CLM Sanitation to make the program more effective at reducing waste	When Contract is Up												Staff Time	Sanitation Enterprise Fund	PWD	
Implement a City-wide program to recycle yard trimmings at Enviro Recyclers facility	X	X	X	X	X	X	X	X	X	X	X	X	Ongoing	Staff Time	Sanitation Enterprise Fund	PWD
Explore opportunities to purchase City-owned composting bins and/or provide composting bins to residents		X		X		X		X		X			Ongoing	\$5,000	Sanitation Enterprise Fund	PWD
Explore implementation of a rate structure program to encourage recycling		X	X	X									2010	Staff Time	Sanitation Enterprise Fund	PWD
Promote and advertise available programs related to recycling, yard trimmings, and composting	X	X	X	X	X	X	X	X	X	X	X	X	Ongoing	Staff Time	General Fund	PWD
<b>Collection</b>																
Work with contracted haulers to ensure waste collection is efficient and consistent	X	X	X	X	X	X	X	X	X	X	X	X	Ongoing	Staff Time	Sanitation Enterprise Fund	PWD
Adopt the GEMA Debris Management Plan for disaster management to meet Fairburn's needs		X	X	X	X								2011	\$10,000	General Fund	PWD
Develop and enforce reporting requirement for haulers contracted by the City		X	X	X	X	X	X	X	X	X	X	X	Ongoing	Staff Time	Sanitation Enterprise Fund	PWD
Explore alternative collection methods to increase waste reduction		X		X		X		X		X			Ongoing	Staff Time	Sanitation Enterprise Fund	PWD
Continue to enforce the City's Litter Ordinance	X	X	X	X	X	X	X	X	X	X	X	X	Ongoing	Staff Time	General Fund	PWD
Conduct regular clean-ups of areas known to be "hot spots" for illegal dumping	X	X	X	X	X	X	X	X	X	X	X	X	Ongoing	Staff Time	General Fund	PWD
<b>Disposal</b>																
Ensure that space is available at landfills for waste generated in the City	X		X		X		X		X		X		Ongoing	Staff Time	General Fund	PWD
Collect host fees from SafeGuard	X	X	X	X	X	X	X	X	X	X	X	X	Ongoing	Generated Revenue	Sanitation Enterprise Fund	PWD



City of Fairburn, Georgia  
Solid Waste Management Plan

Project	Year Started											Year Completed	Cost Estimate	Funding Sources	Responsible Party	
	2007	2008	2009	2010	2011	2012	2013	2014	2015	2016	2017					
<b>Land Limitations</b>																
Utilize the Solid Waste Management Plan when siting potential facilities		X	X	X	X	X	X	X	X	X	X	X	Ongoing	Staff Time	General Fund	City Staff
Update and maintain maps as land use and zoning changes occur		X	X	X	X	X	X	X	X	X	X	X	Ongoing	\$5,000 Annually / Map Updates	General Fund	City Staff
Ensure siting requirements are enforced and conducted in a manner consistent with the Solid Waste Management Plan		X	X	X	X	X	X	X	X	X	X	X	Ongoing	Staff Time	General Fund	PWD
Ensure that new facilities are compliant with state and federal regulations		X	X	X	X	X	X	X	X	X	X	X	Ongoing	Staff Time	General Fund	PWD
<b>Public Education &amp; Involvement</b>																
Continue to inform residents and businesses of services through educational materials	X	X	X	X	X	X	X	X	X	X	X	X	Ongoing	\$7,500 Annually / Public Education	General Fund	PWD
Work with non-profit groups like KSFB and Clean Water Campaign to educate and involve residents in a variety of waste management topics	X	X	X	X	X	X	X	X	X	X	X	X	Ongoing	\$7,500 Annually / Public Education	General Fund	KSFB / City Staff
Continue to produce newsletters and flyers promoting recycling, mulching, yard trimming programs, and other waste reduction programs	X	X	X	X	X	X	X	X	X	X	X	X	Ongoing	\$7,500 Annually / Public Education	General Fund	PWD
Join the Governor's Litter Initiative "Litter. It Costs You" program		X											2008	\$7,500 Annually / Public Education	General Fund	PWD
Continue to hold Great American Cleanup	X	X	X	X	X	X	X	X	X	X	X	X	Ongoing	\$7,500 Annually / Public Education	General Fund	KSFB / City Staff
Continue to implement "Bring one for the Chipper" program	X	X	X	X	X	X	X	X	X	X	X	X	Ongoing	\$7,500 Annually / Public Education	General Fund	KSFB / City Staff
Continue to hold Household Hazardous Amnesty Day	X	X	X	X	X	X	X	X	X	X	X	X	Ongoing	\$7,500 Annually / Public Education	General Fund	KSFB / City Staff

### **8.3 PLAN UPDATES & AMENDMENTS**

The City will review the implementation strategy on an annual basis to ensure the short-term work program is on schedule. The implementation strategy and short-term work program will be updated every few years as necessary to account for unforeseen needs and goals that were not identified in the initial Solid Waste Management Plan.