

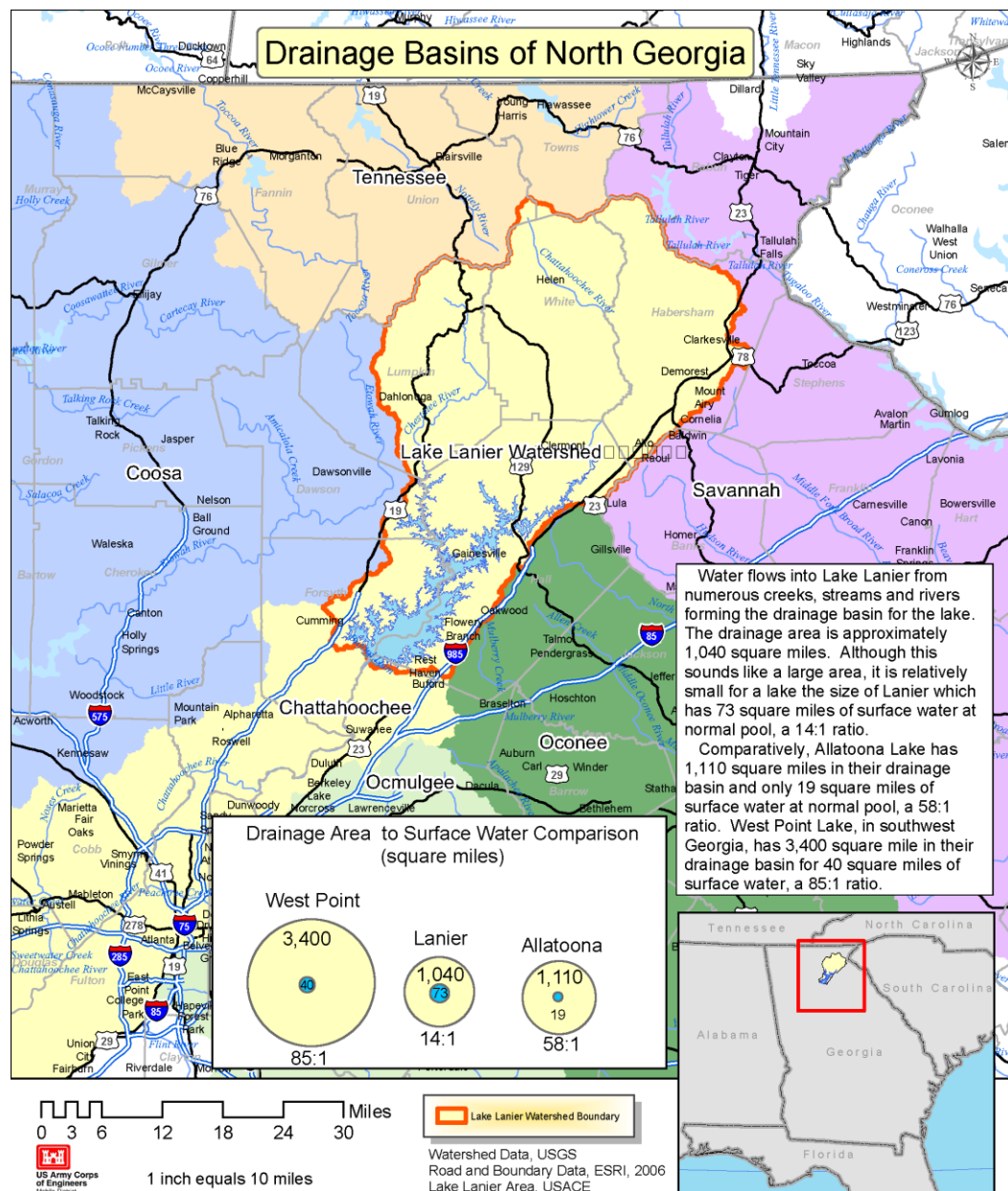
## Why are we still in a Level 2 Drought?

Georgia's Environmental Protection Division has declared a drought response for much of Georgia, including all 15 counties in the Metropolitan North Georgia Water Planning District. Winter & Spring rains have thus far failed to refill Lake Lanier, which is about 8 feet below full pool. The Lake Lanier-Chattahoochee River system serves as the main water source for much of the region's population.

It seems as if we have had a lot of rain recently. How could we possibly still be in a drought? The answer is Lake Lanier is a relatively large lake and is fed by a small, narrow watershed. If the right amount of rain does not fall in the right place, it makes it difficult for Lake Lanier to recover.

Thankfully recent rains have provided short-term relief for your landscape; however, sufficient rainfall to provide significant improvement to Lake Lanier has not occurred.

The illustration below really shows these circumstances:



We rely heavily on word of mouth to spread the word about the drought and water conservation. That is why it is more important than ever for citizens to be good stewards of our water supply. EPD closely monitors a number of drought indicators including streamflows, reservoir levels, groundwater, short-term climate predictions and water supply conditions. Should conditions deteriorate further, a Level 3 Drought Response would have to be considered. A Level 3 Drought Response prohibits most types of outdoor water use, including general landscape watering.

More water conservation information is available at

<http://epd.georgia.gov/water-conservation>

## Fulton County



## Outdoor Water Restrictions for lawns, gardens and trees

Under the Level 2 drought response, outdoor watering of lawns, gardens and trees is limited to a maximum of **twice a week** (even addresses and sites with no numbered address may water **Wednesdays and Saturdays before 10 a.m. and after 4 p.m.**, while those in odd-numbered addresses may water on **Thursdays and Sundays before 10 a.m. and after 4 p.m.**). **Water only as needed!** Remember: In the fall and winter months, outdoor plants need less water. **Water when plants show signs of distress** (curling, wilting, graying foliage).

SUNDAY	MONDAY	TUESDAY	WEDNESDAY	THURSDAY	FRIDAY	SATURDAY
 ODD			 EVEN	 ODD		 EVEN



## What's Allowed

*The following practices are not subject to the 4pm to 10am or twice a week restrictions:*

- Irrigation of personal food gardens
- Irrigation of new and replanted seed, turf or plants for a period of 30 days following installation
- Watering with drip irrigation or soaker hose
- Hand watering, including hoses with shut-off nozzles
- Water from private wells and bodies of water on property
- Hydroseeding
- Irrigation of sports fields, golf courses and public recreational turf areas
- Irrigation of plants for sale