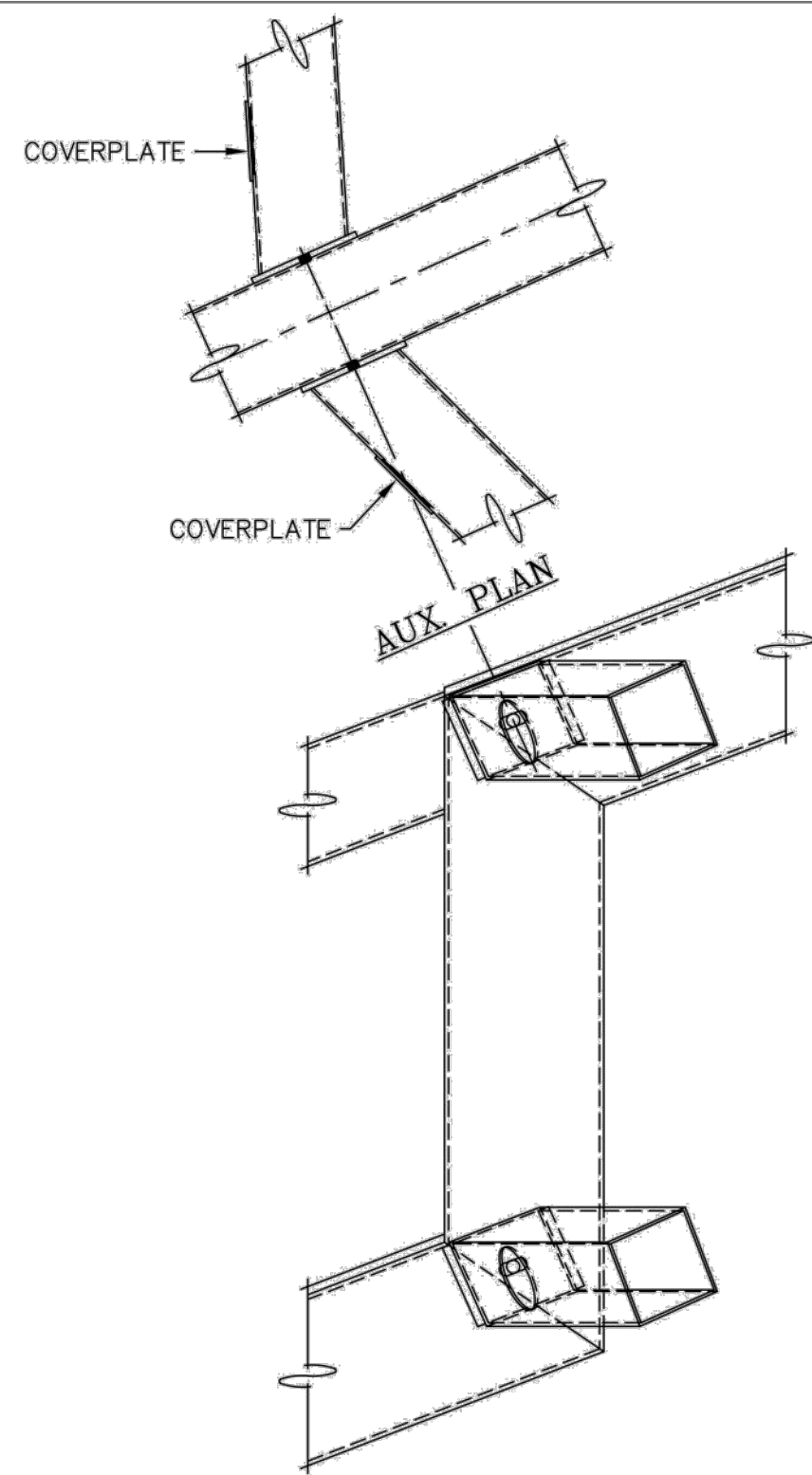
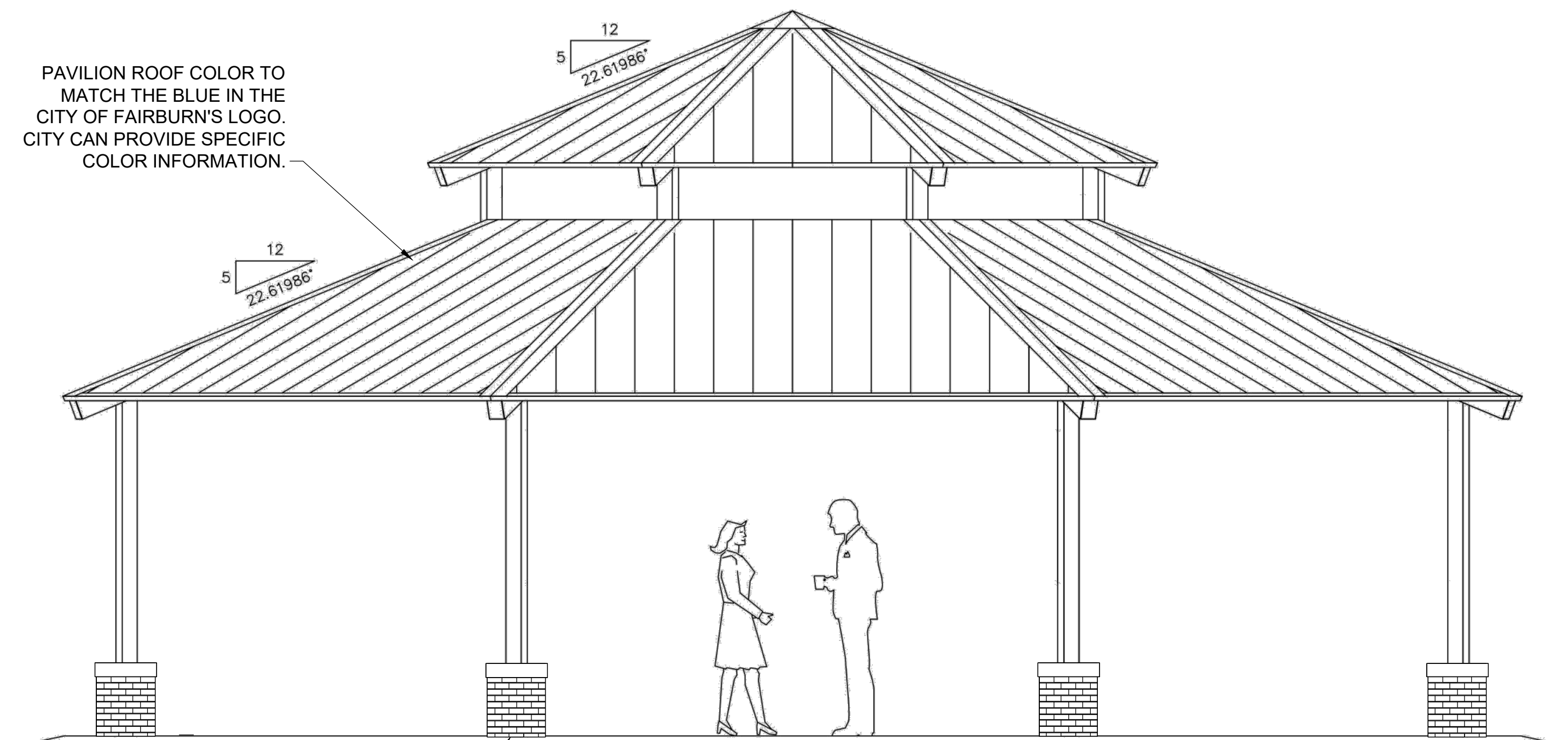


PRELIMINARY DRAWING — NOT FOR CONSTRUCTION



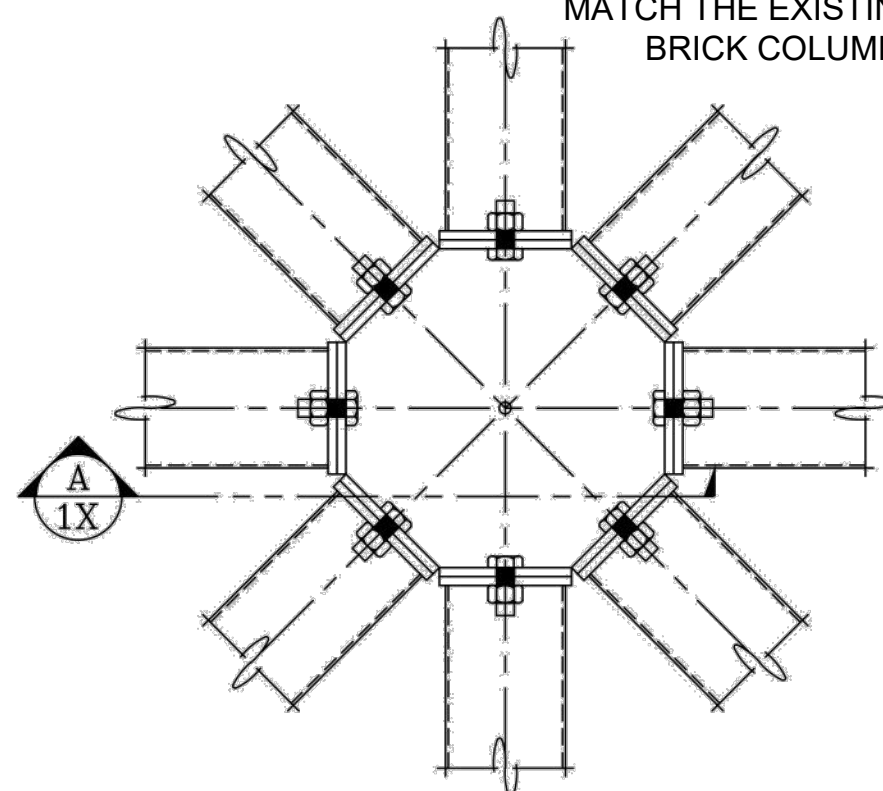
PURLIN TO HIP CONNECTION

PAVILION ROOF COLOR TO MATCH THE BLUE IN THE CITY OF FAIRBURN'S LOGO. CITY CAN PROVIDE SPECIFIC COLOR INFORMATION.

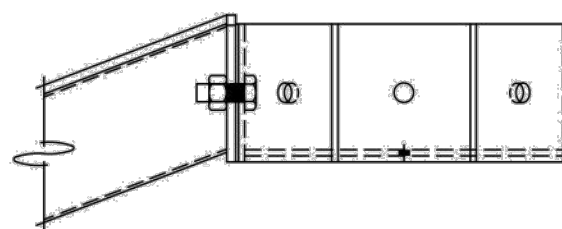


ELEVATION

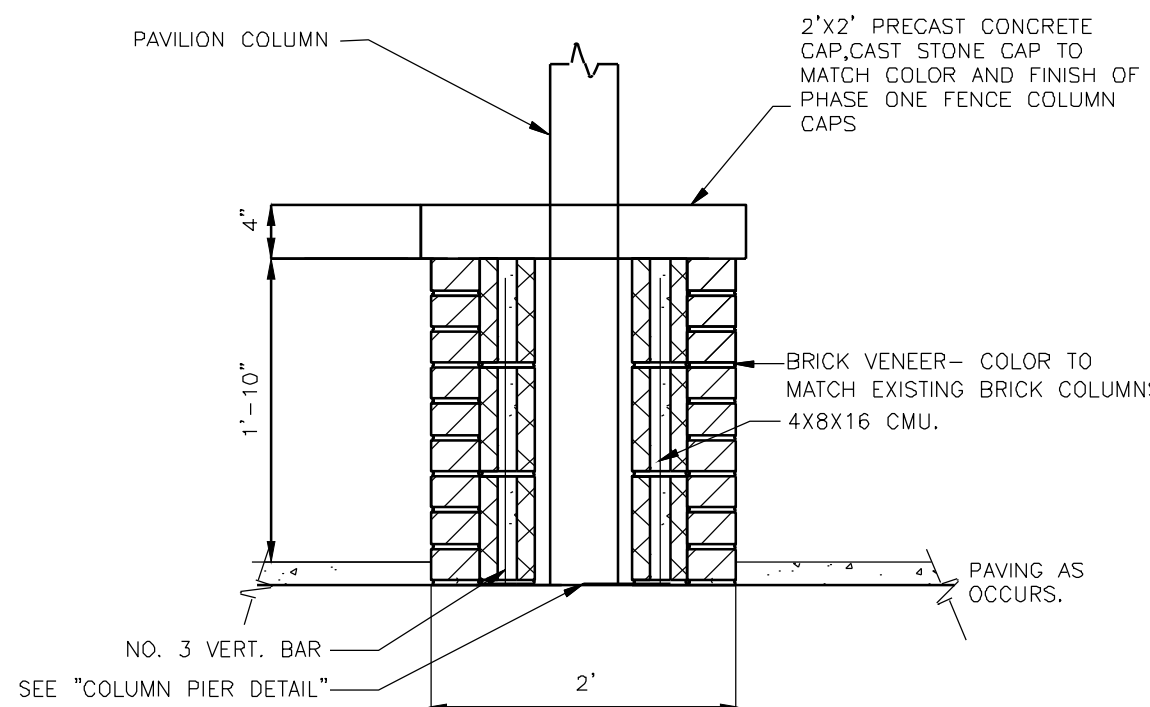
NOTE: CONTRACTOR TO PROVIDE STRUCTURAL DESIGN FOR CONCRETE PAD OF PAVILION AND COLUMNS WITH BRICK PIERS SUPPORTED BY GEOTECHNICAL REPORT AND TESTING.



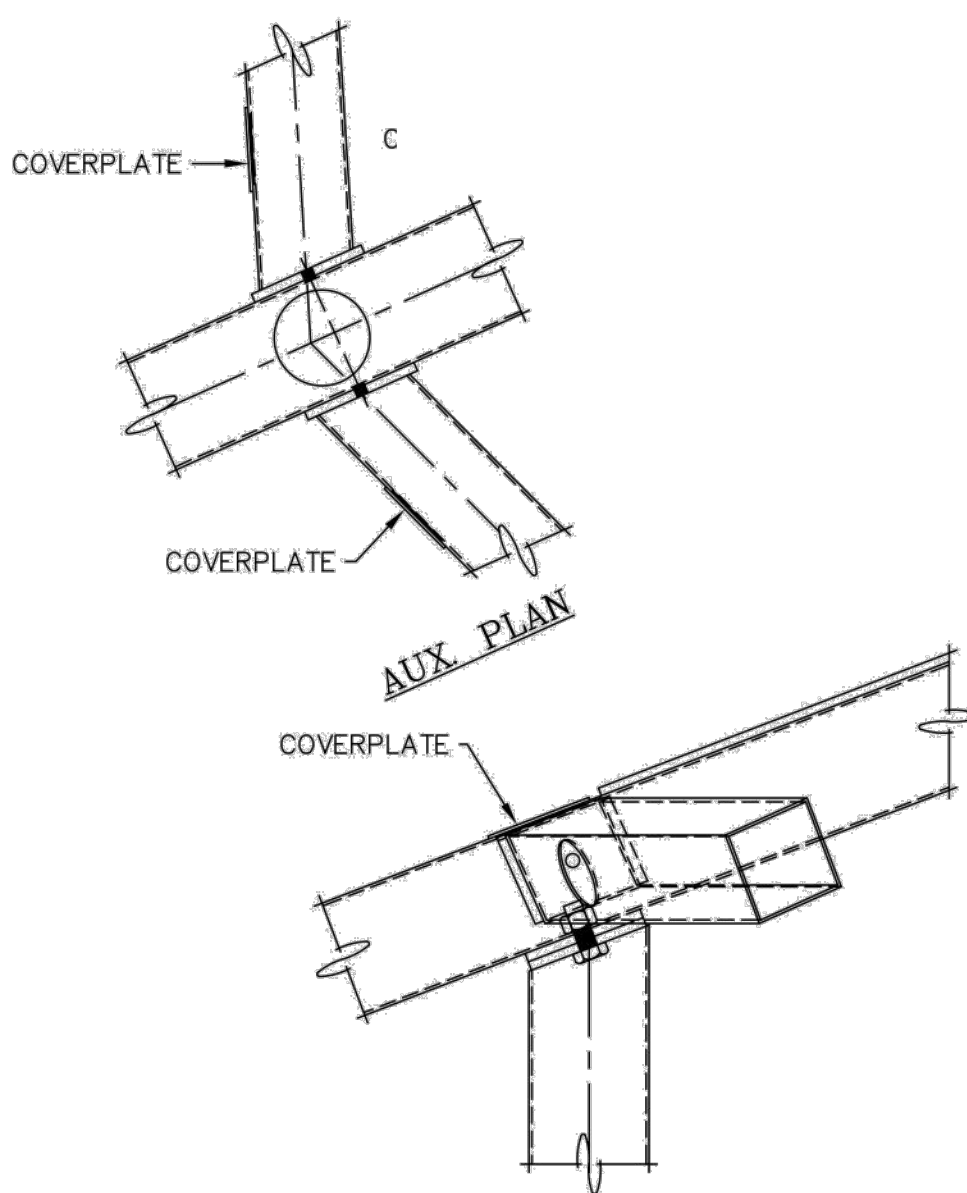
PEAK CONNECTION



SECTION A
1X



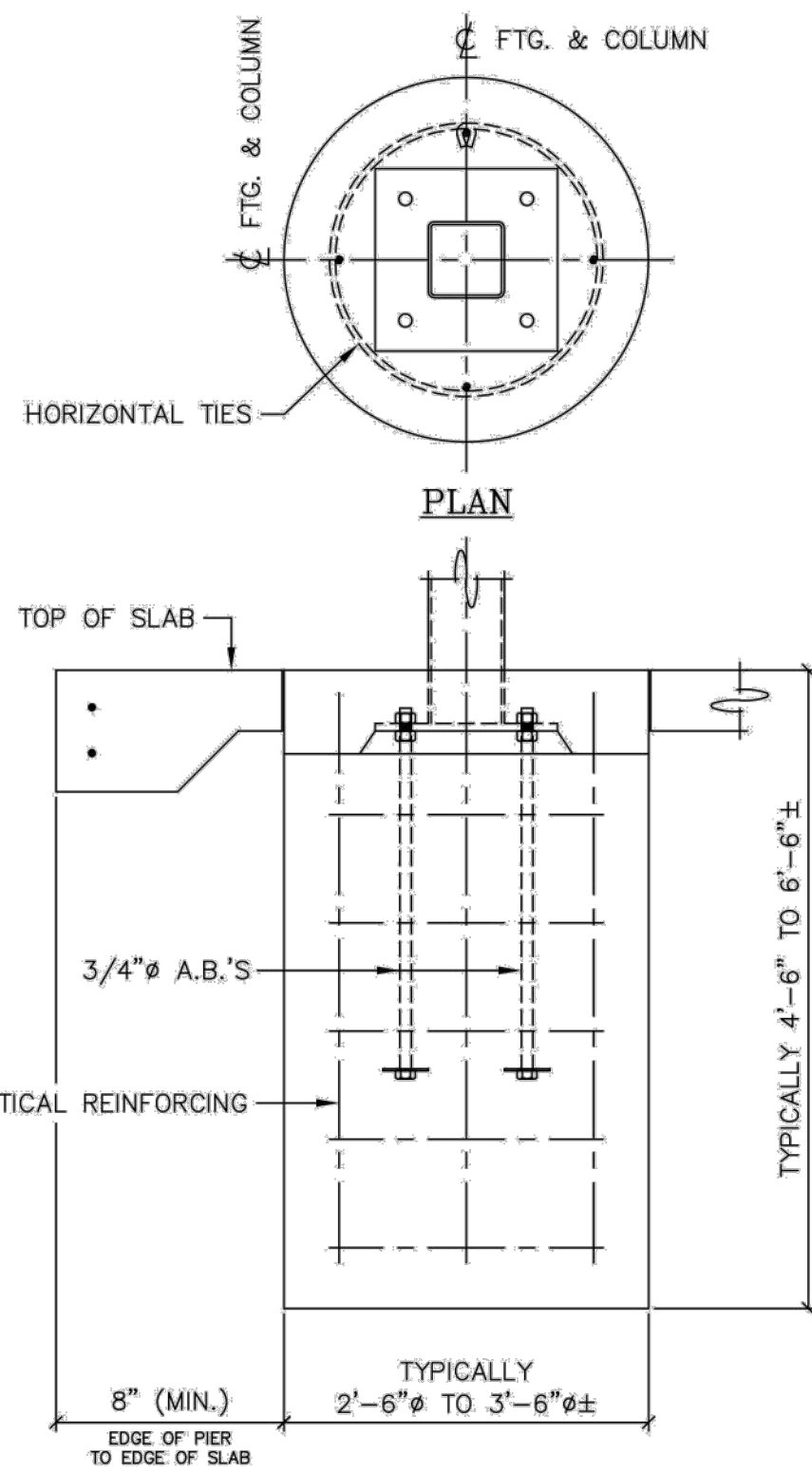
A-1 PAVILION COLUMN BASE
NTS



COLUMN TO HIP CONNECTION

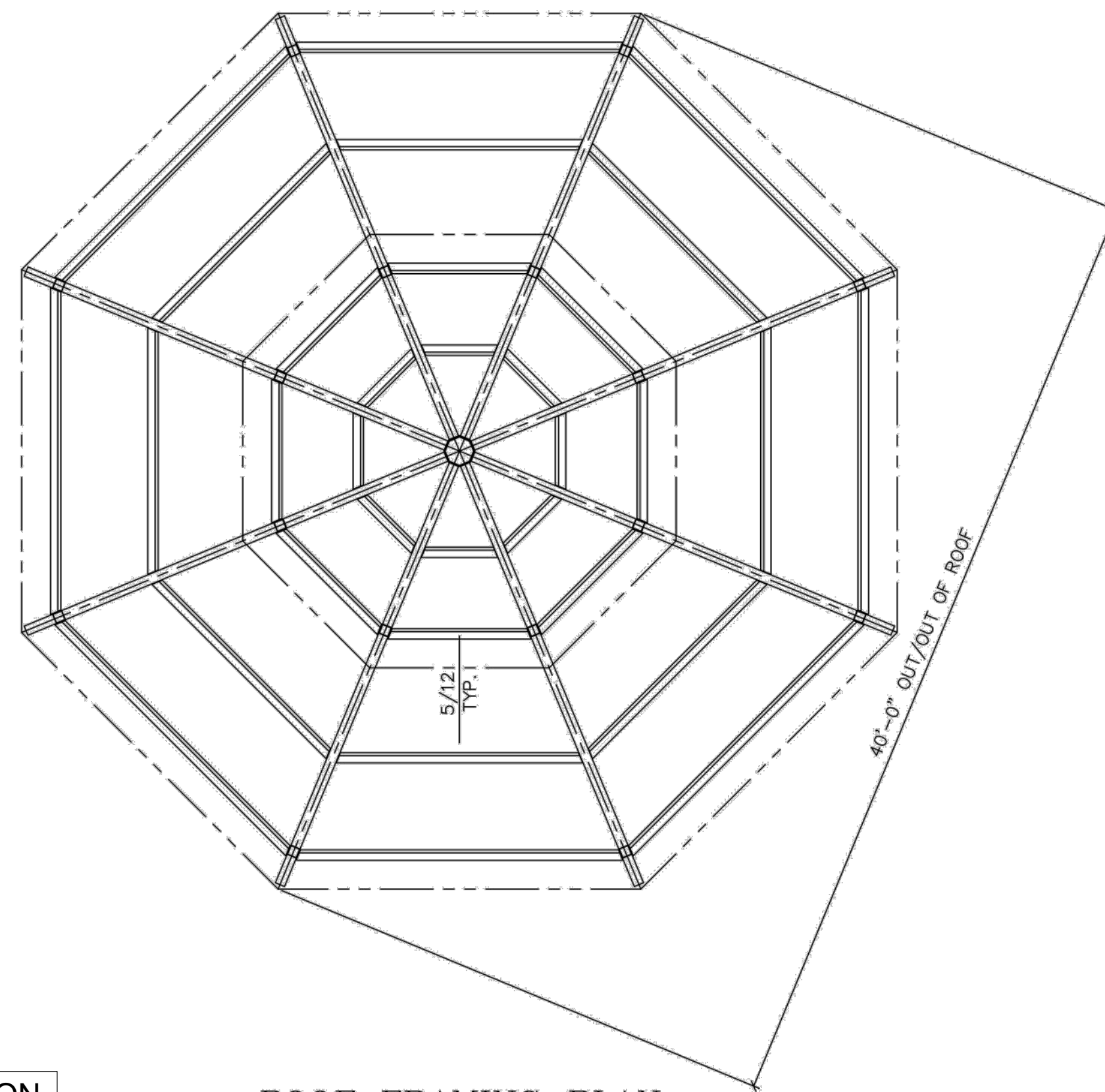


A2 PREFABRICATED 12' DIAMETER ALL STEEL OCTAGONAL SHELTER
SCALE: N.T.S.

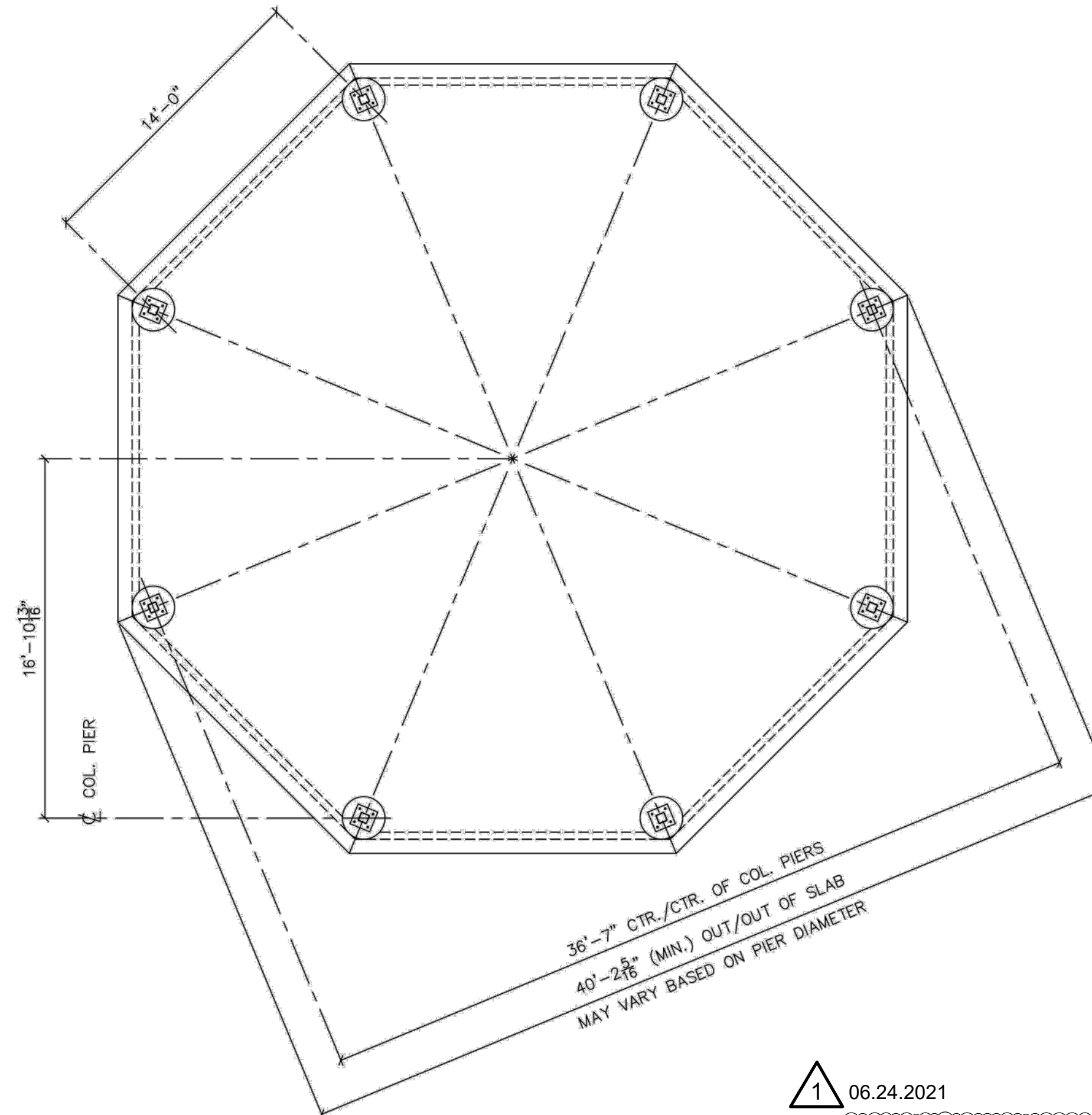


COLUMN PIER DETAIL

ACTUAL DESIGN WILL VARY DUE TO BUILDING CODE REQUIREMENTS AND MAY BE SUBSTANTIALLY LARGER



ROOF FRAMING PLAN



FOUNDATION PLAN

1 06.24.2021

WHOLE SHEET REVISED

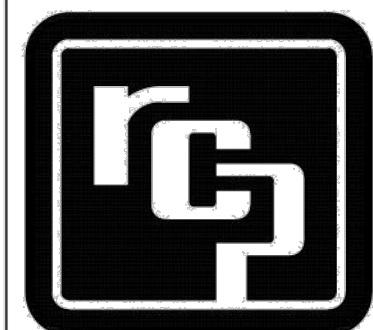
THIS PRINT IS THE PROPERTY OF RCP SHELTERS AND IS NOT TO BE USED, COPIED, OR REPRODUCED WITHOUT THEIR EXPRESSED WRITTEN PERMISSION.

TS-OCT40-2T-05

NUMBER OF PURLINS MAY VARY DEPENDING UPON DESIGN LOADS. SIZES AND SPACING OF PURLINS TO BE DETERMINED DURING FINAL DESIGN.

RCP SHELTERS, INC.

2100 SE RAYS WAY STUART, FL 34994 PO BOX 25 STUART, FL 34995-0025
SHELTERS PAVILIONS CONCESSIONS KIOSKS FABRIC SHADE
RESTROOMS BANDSHELLS MINI-SHELTERS DUGOUTS FABRIC SAIL
Phone 800-525-0207 Fax 772-288-0207
www.rcpselters.com Email info@rcpselters.com



PROJ. NO.:

DRAWN: CJT 2-27-08

CHK'D: JLD

REV 1:

REV 2:

REV 3:

REV 4:

REV 5:

CAD NO: AS-OCT40-2T-05

EEC JOB NO.: 6832 R

SHEET NO.:

C-504