



DOWNTOWN FAIRBURN LCI

PUBLIC WORKSHOP

APRIL 15TH, 2021



THE
COLLABORATIVE
FIRM



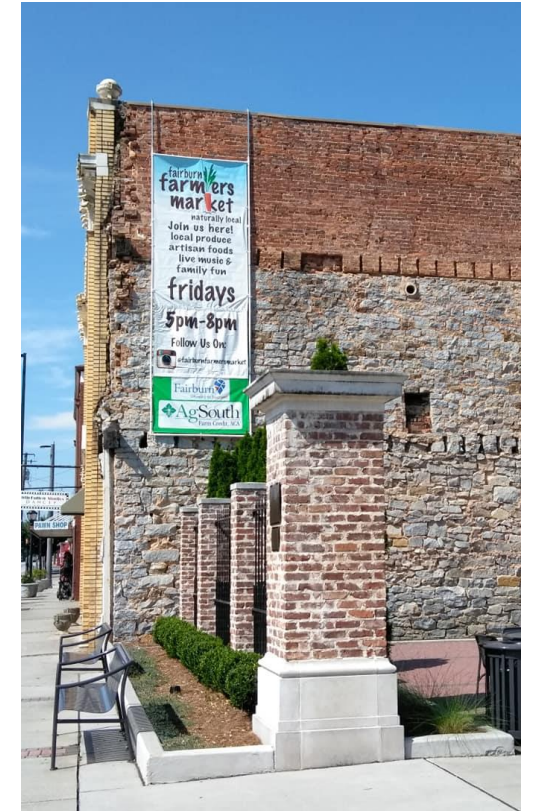
metro analytics

Kimley»Horn

Fairburn 
Downtown Master Plan Update

AGENDA

- Introductions and Background
- Overview and Purpose of Meeting
- Fairburn Success and Accomplishments
- LCI Peer Community Examples
- Transportation Discussion
- Focus Area Discussion
- Breakout Groups
- Report Out



OVERVIEW AND PURPOSE

- Consider:
 - Fairburn accomplishments
 - Character and assets
 - Peer LCI community examples
- Discuss transportation issues
- Discuss potential development type and scale for proposed focus areas



AUDIENCE “CHECK-IN”

Poll 1

Do you live in or near the City of Fairburn? (Choose **one**)

- I live in the City of Fairburn
- I live near the City of Fairburn (Less than 20 minutes)
- I do not live near the City of Fairburn

Poll 2

Do you have a business in the City of Fairburn?

- Yes
- No

Poll 3

What brings you to the City of Fairburn? (Choose **one**)

- Work
- Play/Entertainment
- Family/Friends
- Live

Renderings from Creative Placemaking Strategy



AUDIENCE “CHECK-IN”

Poll 4

What age group category do you fall within?

- 16-21
- 22-35
- 35-55
- 55 and over

Poll 5

What is it that you like about the City of Fairburn? (May choose **multiple**)

- Accessibility
- Small Town Charm
- Restaurants
- Concerts, Performances, the Arts
- Renaissance Festival
- Other (please enter in the chat)

Renderings from Creative Placemaking Plan



BACKGROUND

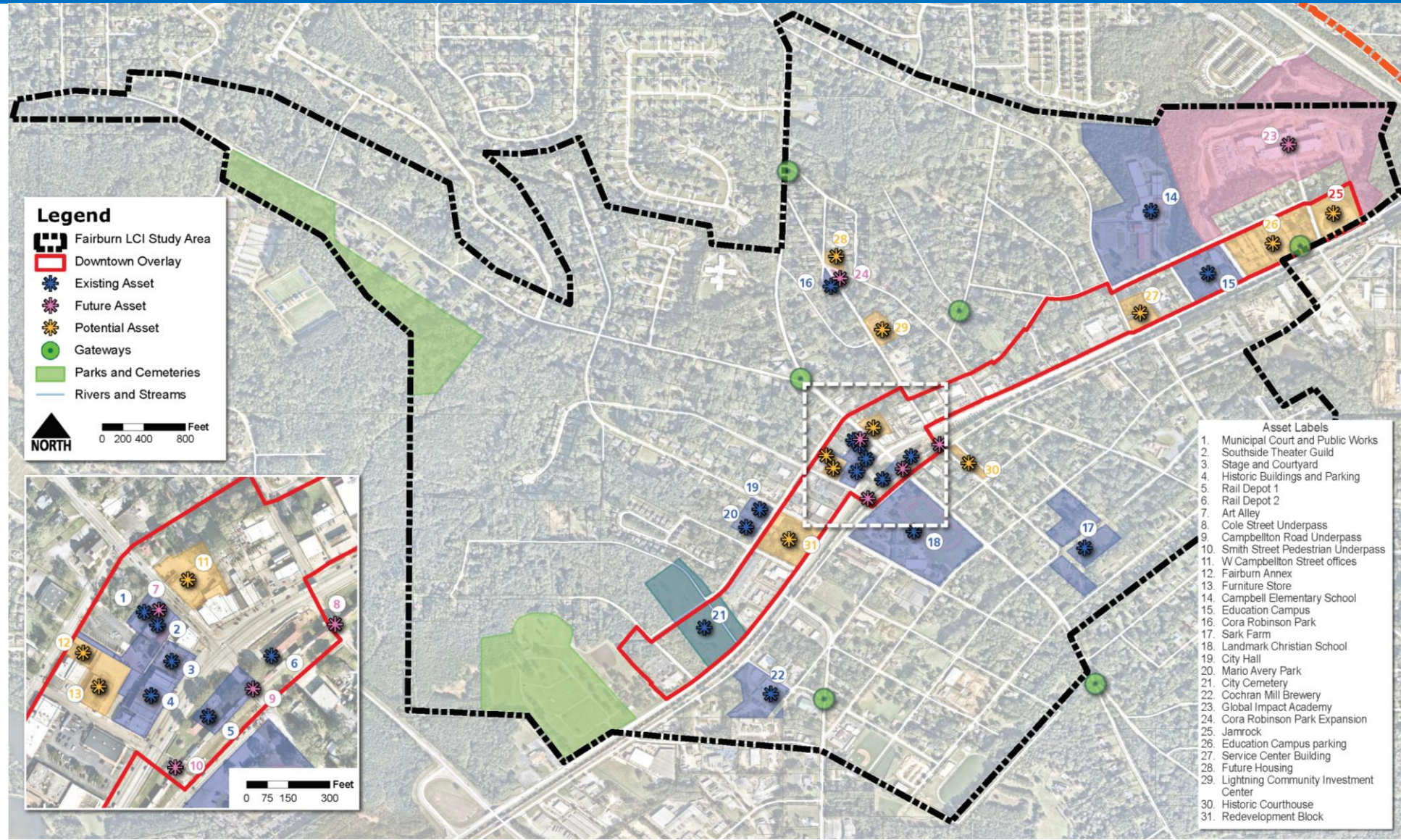
- In 2008, the city of Fairburn commissioned an LCI plan to identify strategies to revitalize and enhance the community's historic downtown
- Current update is building on the previous plan and identifying new ideas and strategies
- Previous plan identified
 - Three primary focus areas
 - Public and private investments
 - Streetscape improvements

FAIRBURN SUCCESS AND ACCOMPLISHMENTS

- Education Campus
- Stage and Courtyard
- LCI Streetscape Project
- Global Impact Academy
- Creative Placemaking Strategy
- Art Alley (project started)
- Improvements in the Lightning Community
- Mural project (awarded)



FAIRBURN CHARACTER AND ASSETS

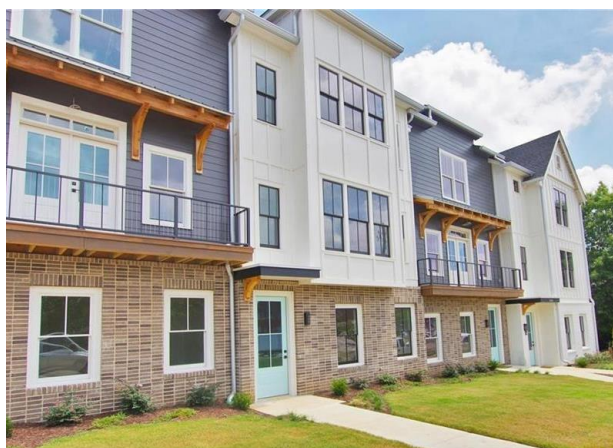


FAIRBURN CHARACTER AND ASSETS



LCI COMMUNITY EXAMPLES

HAPEVILLE, GA



HAPEVILLE, GA



**HAPEVILLE
BLACK HISTORY MONTH
EXHIBITION
& ART WALK**

**ACROSS DOWNTOWN
HAPEVILLE, INCLUDING:**

**THE ACADEMY THEATER
599 N. CENTRAL AVE**

**HAPEVILLE DEPOT MUSEUM
620 S FULTON AVE, 30354**

**FEATURING 40 ARTISTS
LIVE JAZZ & PERFORMANCES +
INTERACTIVE INSTALLATIONS**

SATURDAY 
FEB. 22, 2 - 6 PM 

PHOTO: "THE WILLING CAPTIVES" BY TAFARI MELISIZWE



COLLEGE PARK, GA



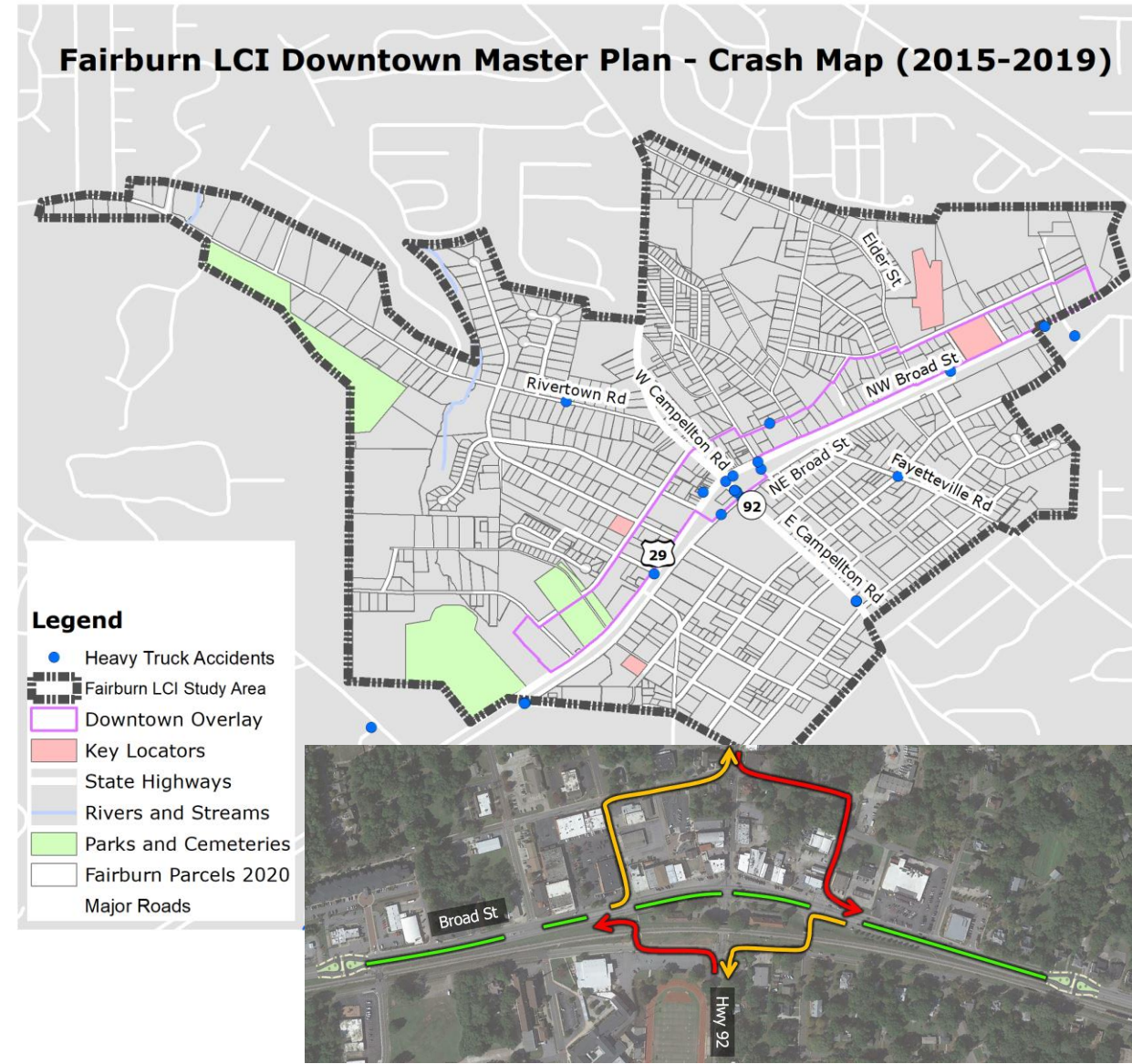
TRANSPORTATION

TRANSPORTATION – ASSESSMENT FINDINGS

- Investment strategies to improve mobility should be focused on operational improvements
- Opportunities presented for on-road bicycle and pedestrian solutions for bicycle and pedestrian mobility Overall lack of existing and projected congestion presents a more favorable environment for Of the 54 commercial vehicle crashes, a great majority are along US 29/Broad Street and SR 74/Campbellton Street
- Distribution of bicycle and pedestrian crashes pretty widespread - roughly half were along US 29/Broad Street and the remainder distributed throughout residential neighborhood streets
- Multiple sidewalk gaps in downtown
- Better pedestrian connectivity needed to higher ridership stops: (Research if part of a plan)
 - NW Broad Street at Dodd Street
 - NW Broad Street at NE Broad Street
 - NW Broad Street at Elder Street

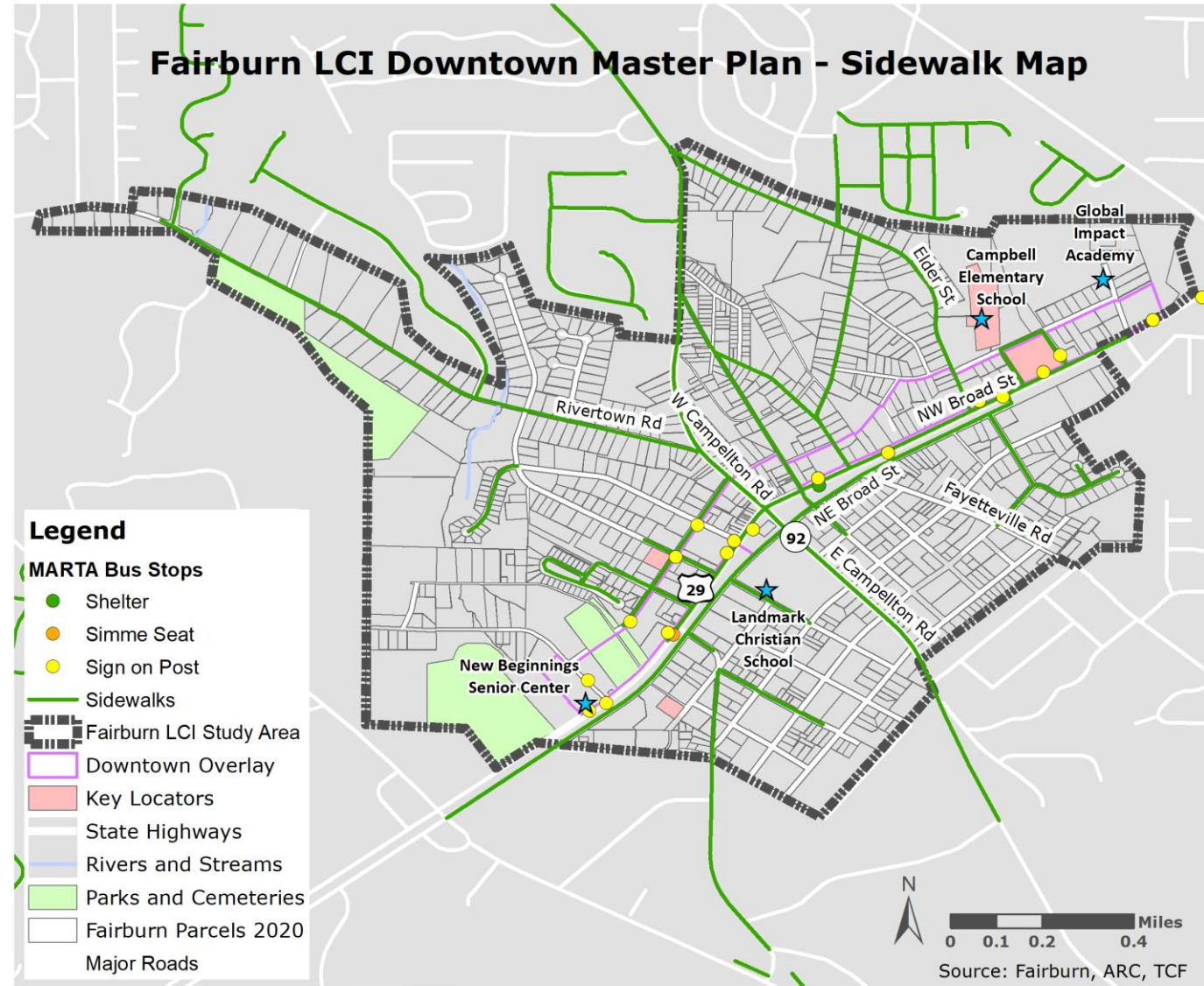
TRANSPORTATION - FREIGHT

- More efforts should be made to reroute northbound truck traffic to access Downtown via SR 74/Fairburn Industrial Boulevard since it is better designed to accommodate trucks than Downtown area streets
- Given the 10' underpass under the CSX line, truck restrictions may be needed along SR 92/East Campbellton Street
- Wayfinding improvements within the baseline investment strategy will also be considered
- There are a few locations that have a high concentration of freight crashes – including the CSX overpass and several locations along US 29/Broad Street



TRANSPORTATION - PEDESTRIAN NEEDS

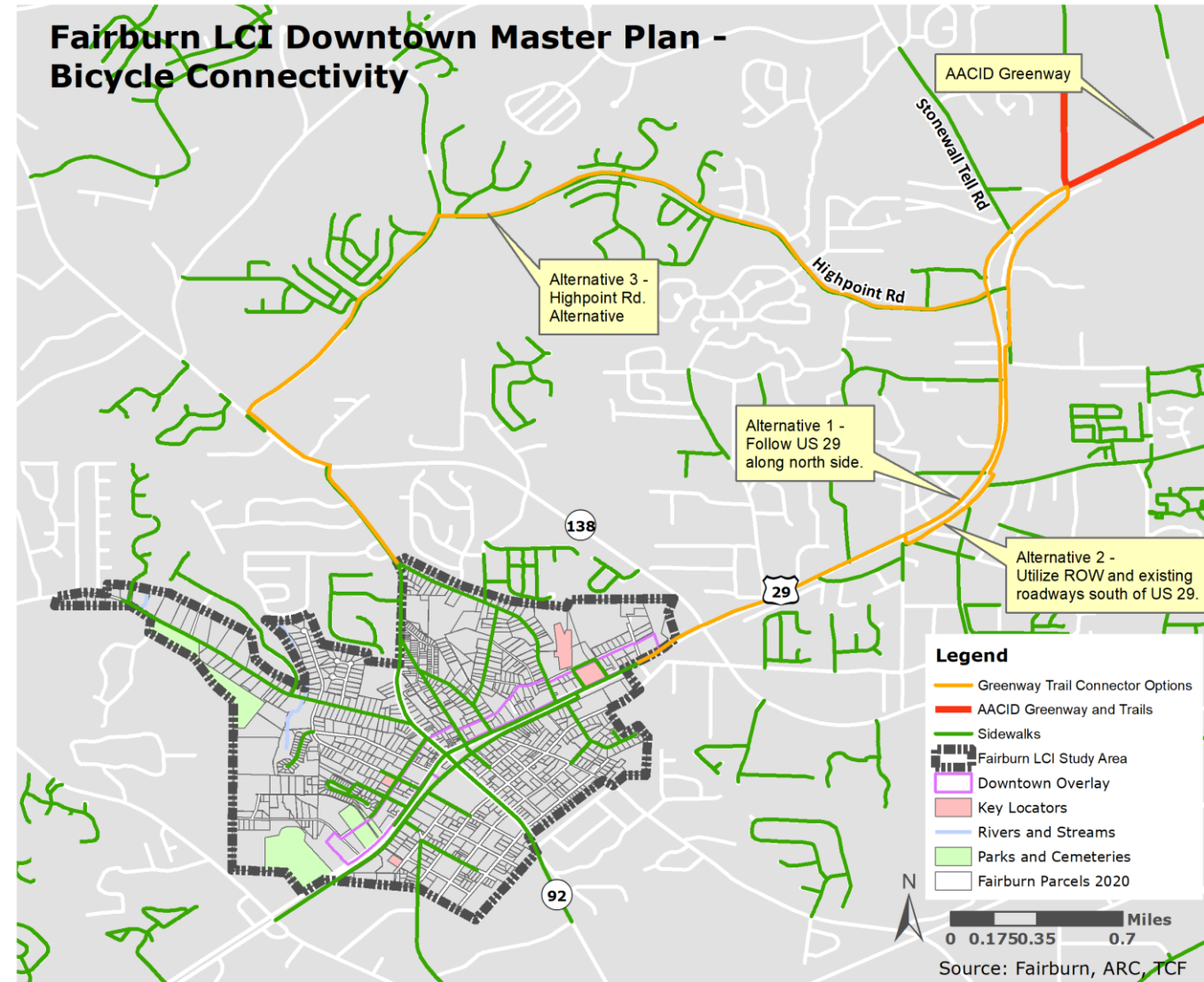
- Where are sidewalks needed most?
- Where are your more critical safety concerns?
- Which crosswalks are in most need of repair?



TRANSPORTATION – BICYCLE CONNECTIVITY

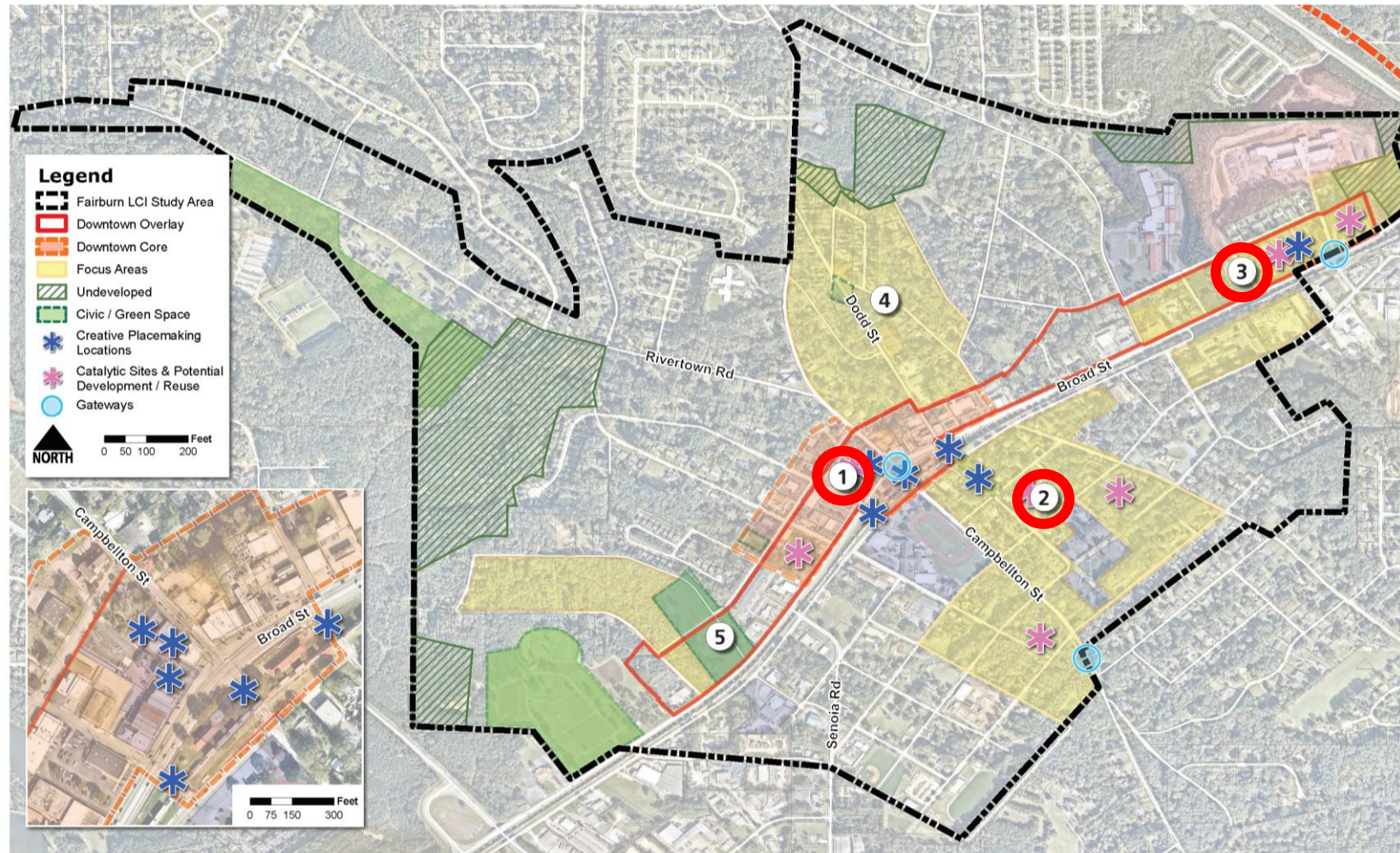
What are the best connections to the planned Aerotropolis Greenway?

- Alternative 1 – North Side of US 29
- Alternative 2 – South Side of US 29
- Alternative 3 – Highpoint Road
- Others?



FOCUS AREA DISCUSSION

FAIRBURN PLACEMAKING & CATALYTIC SITES



LIGHTNING COMMUNITY



CITY OF FAIRBURN ZONING CODE AUDIT

Prepared by
Atlanta Regional Commission Staff
December 2017

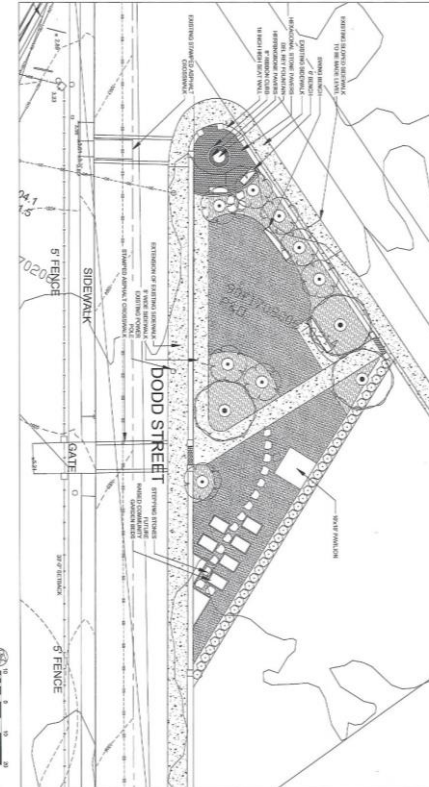


Lightning Community Strategic Plan

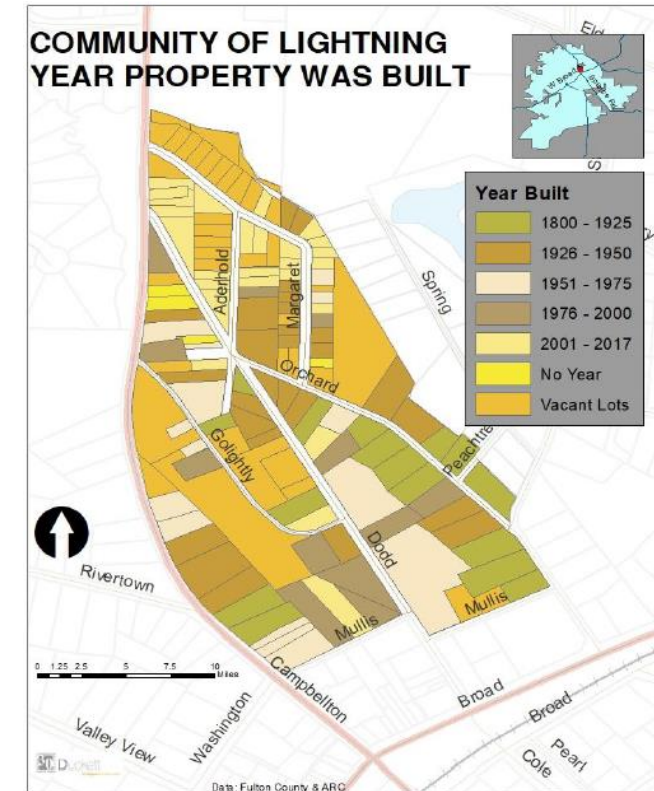


Sponsored by:
City of Fairburn
Prepared by:
Robert and Company
Duckett Design Group, Inc.

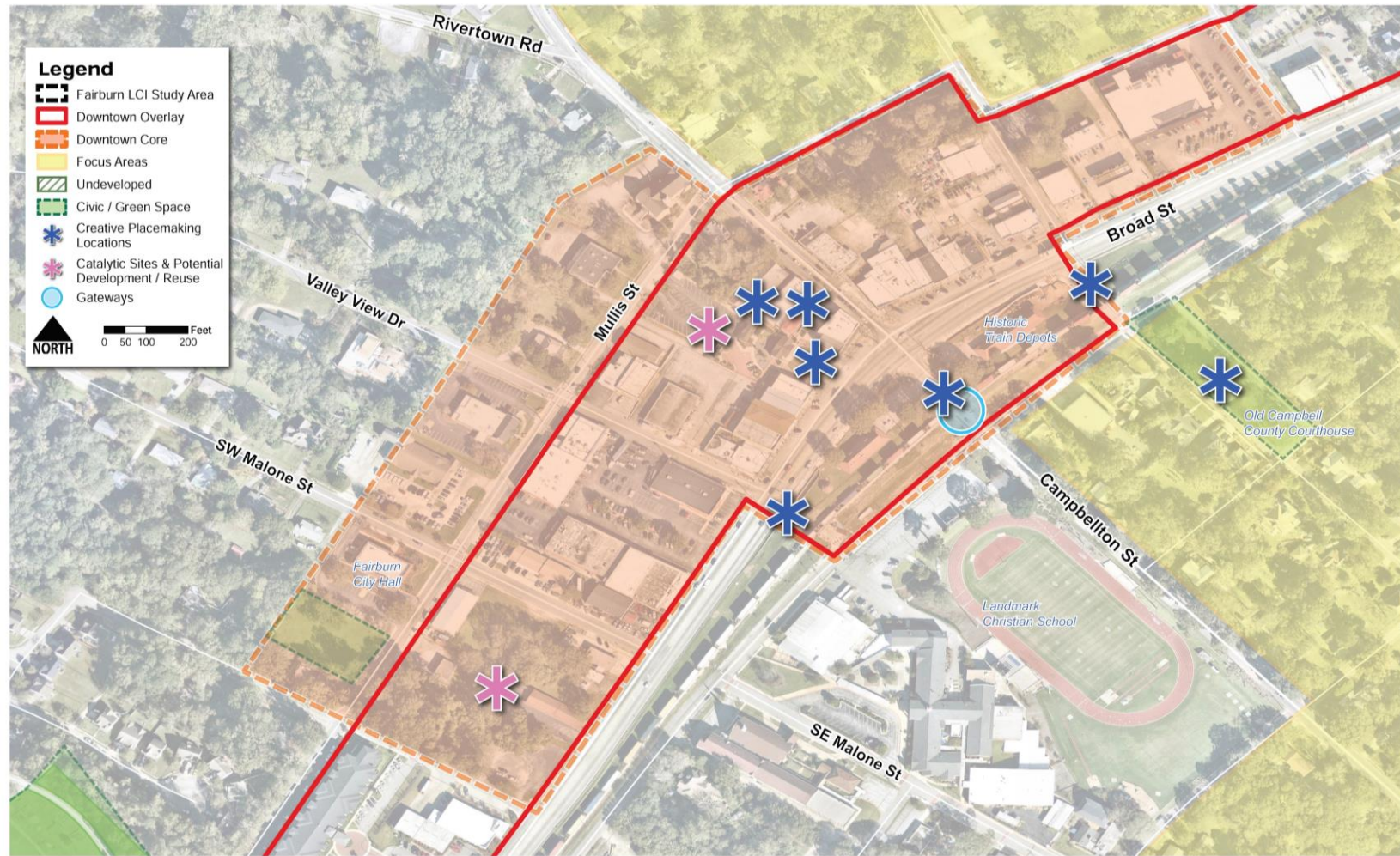
Jan 14, 2019



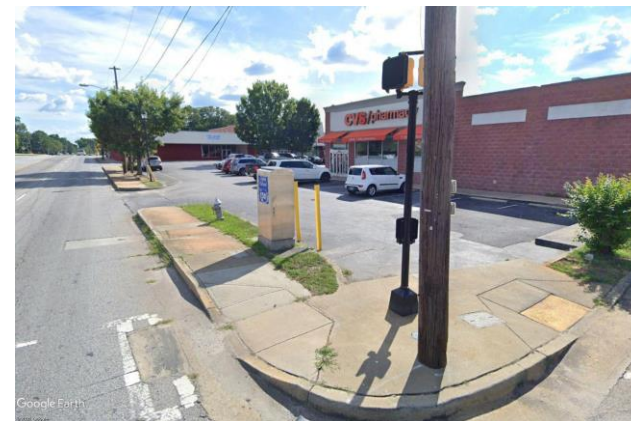
COMMUNITY OF LIGHTNING YEAR PROPERTY WAS BUILT



DOWNTOWN FAIRBURN



DOWNTOWN FAIRBURN



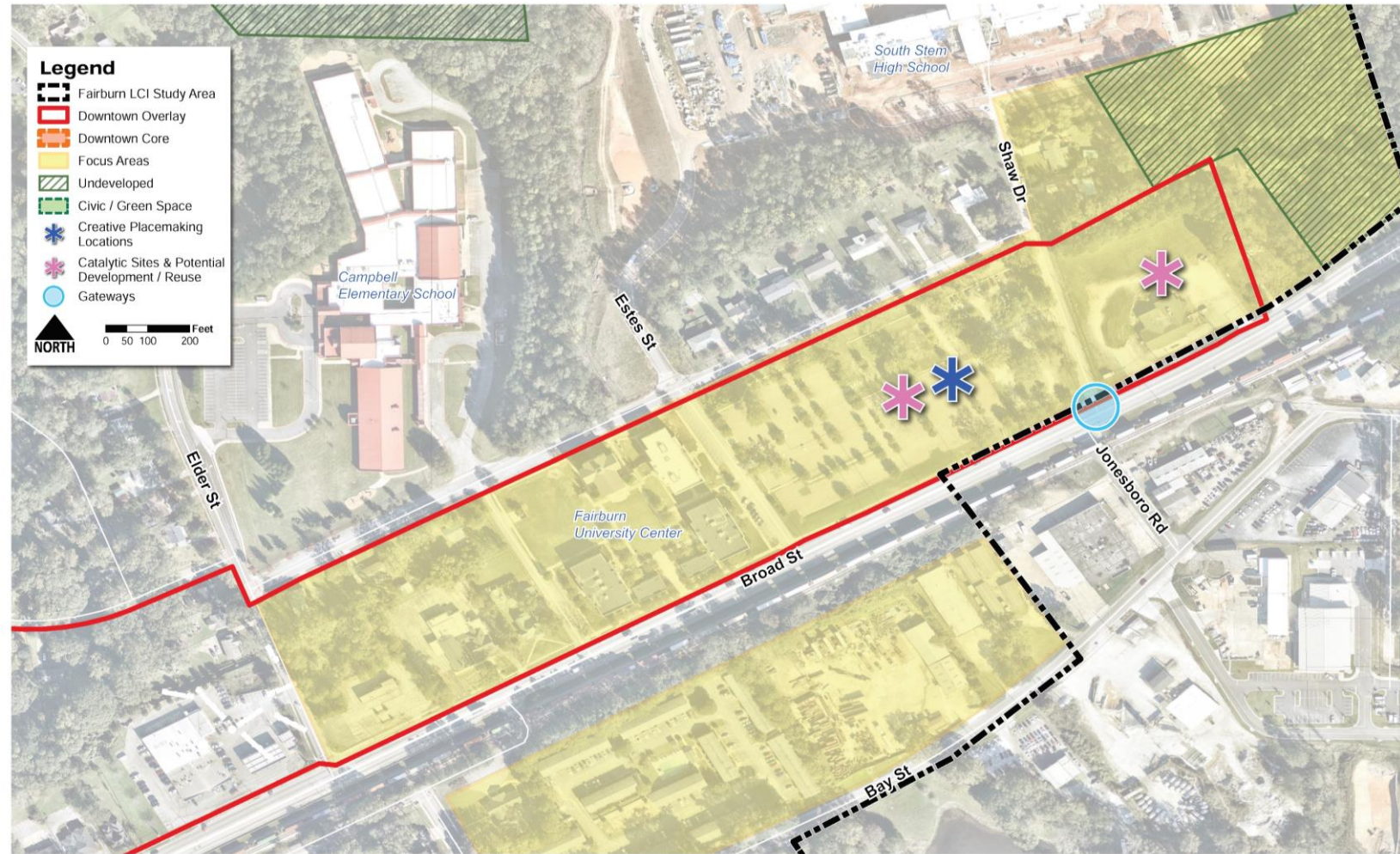
DOWNTOWN FAIRBURN



Whiteboard Exercise

BREAKOUT GROUPS

EDUCATION CAMPUS AREA



EDUCATION CAMPUS AREA

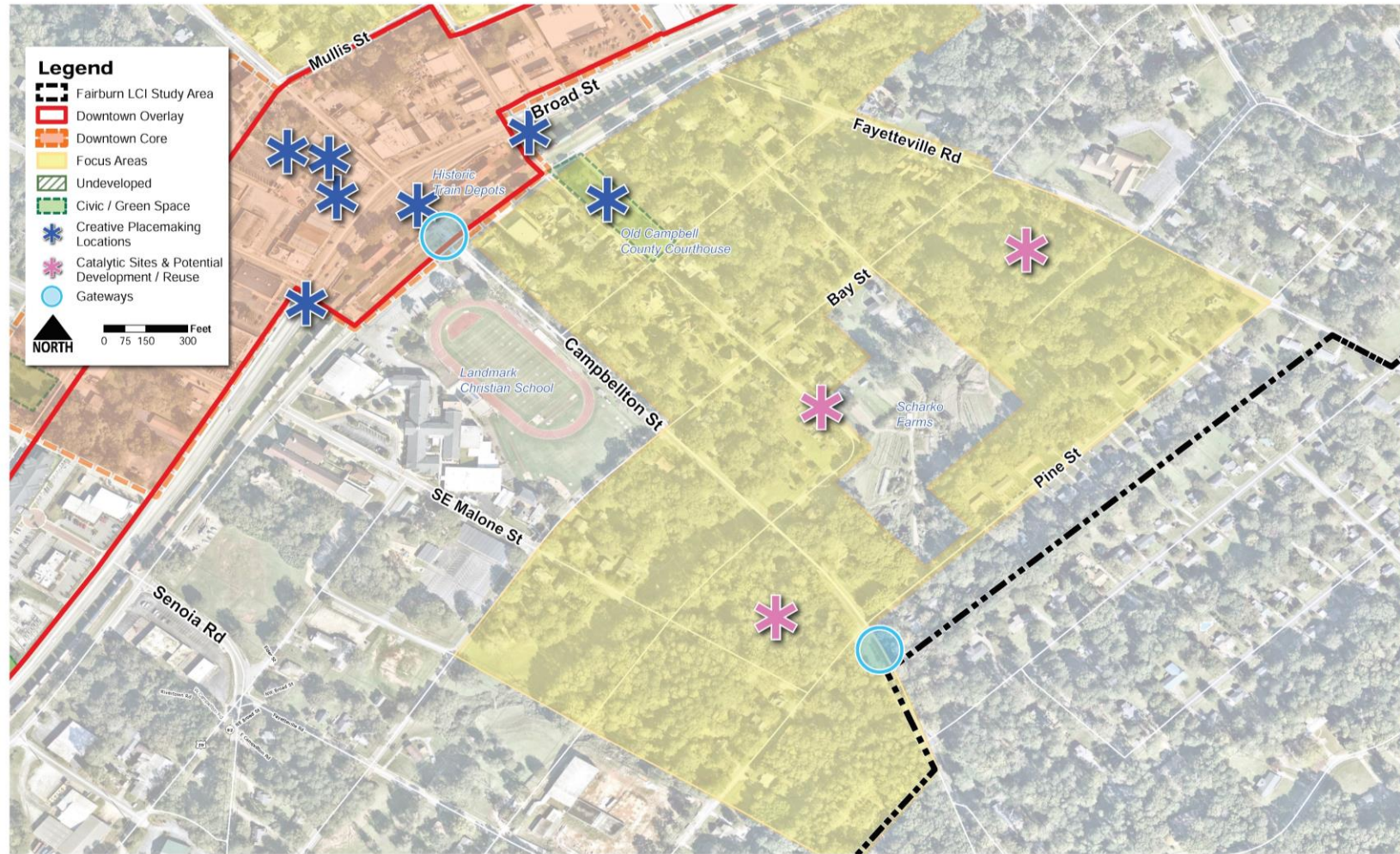


EDUCATION CAMPUS AREA



Whiteboard Exercise

SOUTH DOWNTOWN NEIGHBORHOOD



SOUTH DOWNTOWN NEIGHBORHOOD



SOUTH DOWNTOWN NEIGHBORHOOD



Whiteboard Exercise

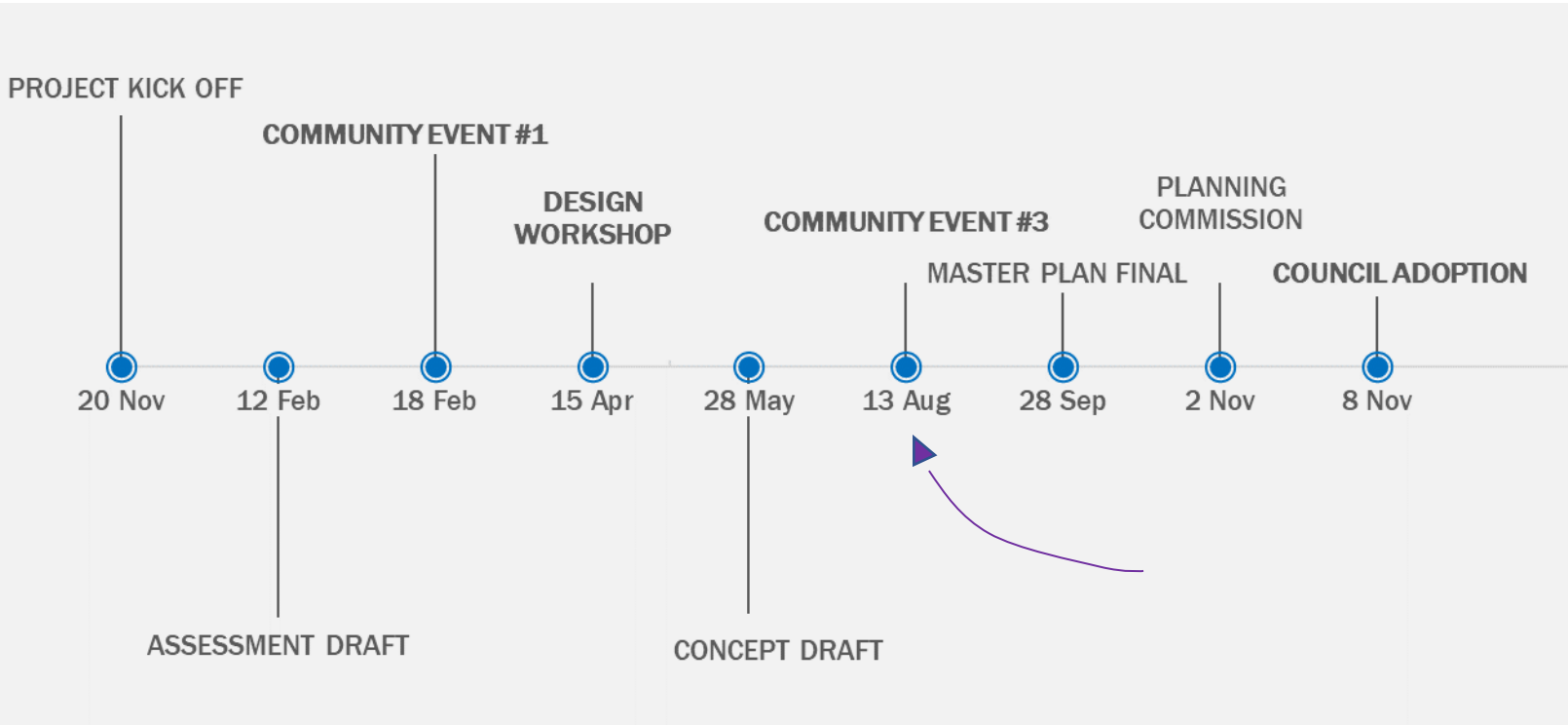
BREAKOUT GROUPS REPORT OUT



metro analytics

Kimley»Horn

THANK YOU!



- ❑ Aug 13th – Save the date!
- ❑ Contact: FairburnLCupdate@fairburn.com
- ❑ Updates: www.Fairburn.com