

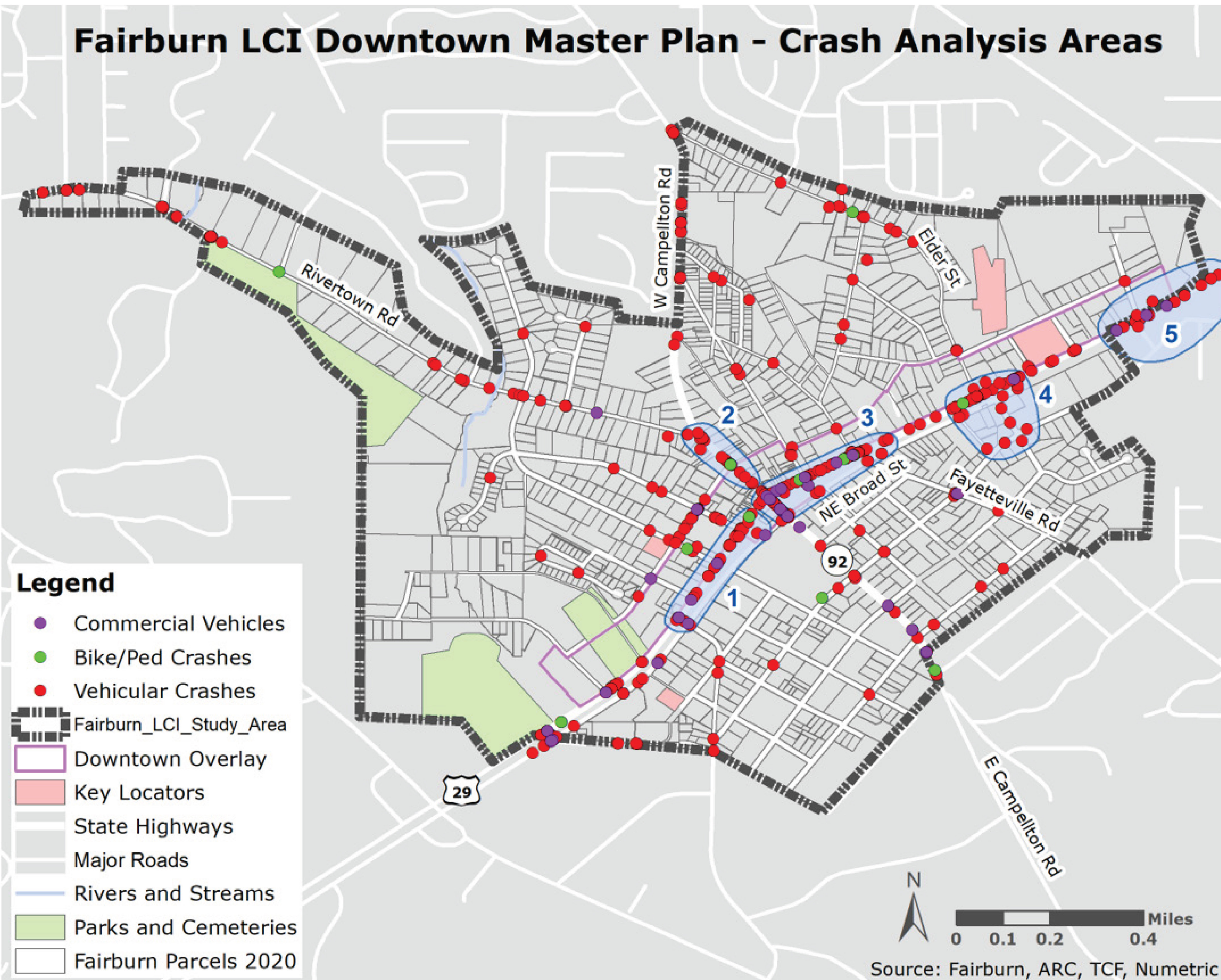




# FOCUS AREA 1

## DOWNTOWN

Fairburn LCI Downtown Master Plan - Crash Analysis Areas



## QUESTIONS

What is going on? What is your experience?

**Area 1:** US 29/Broad Street – Senoia Road to Smith Street

**Area 2:** US 92/W. Campbellton Road - Rivertown Road to US 29/Broad Street

**Area 3:** US 29/Broad Street – W Campbellton Road to E. of Strickland Street (Family Dollar)

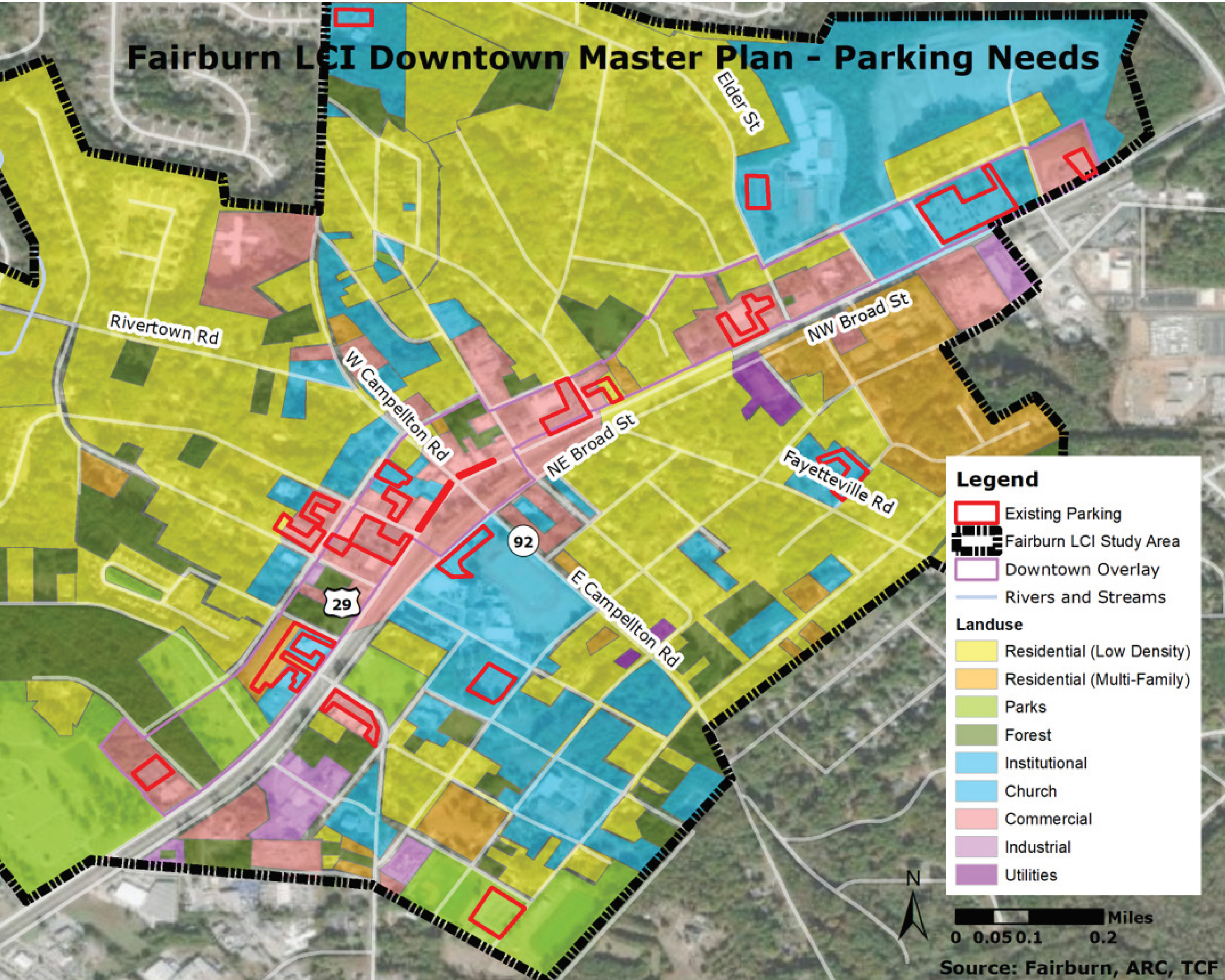
## NOTES

Most truck drivers not used to the stopping and starting on 29. more lights and crossings,- trucks start go around?

traffic signals at crosswalks (intersections)

There are no left turn lights.





PARKING

Parking in downtown has been identified as a key issue. This map identifies existing public parking and other large parking lots (outlined in red)

What are the barriers to using existing lots?

Do these lots fill up?

Can wayfinding can be an effective tool?

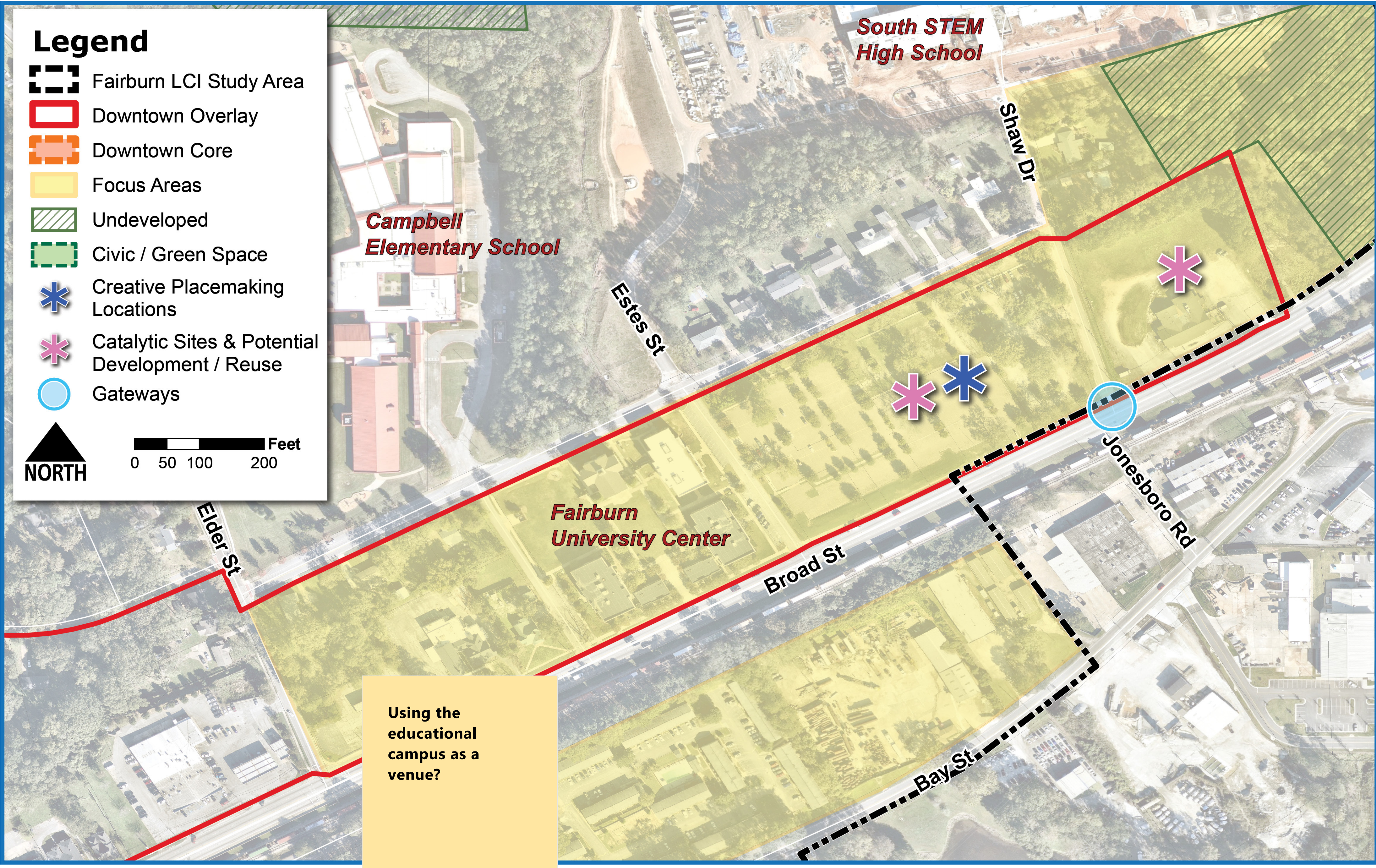
NOTES

- combination of issues, need central parking area that people can use (like piedmont park parking deck)
- visible parking is on street with heavy traffic. lots behind buildings arent visible (dont feel safe)
- would walk instead of driving to downtown if the sidewalks were in better shape
- Most visible parking is on street with busy traffic, so some safety concerns. There are lots behind buildings, but they aren't as visible so probably not used as much. Directional signage may help
- Traffic makes it hard to get in and out of traffic spaces.
- If the space is well developed and pedestrian friendly people don't mind parking and walking



# FOCUS AREA 2

## FAIRBURN EDUCATION CAMPUS AREA



### NOTES

#1, #4, and #6 and #9	There should be opportunities to bring technology to the area, partnering with local schools and colleges	Art should be infused into this area, collaborating with local schools Creekside, Bear Creek, EC West, Global Impact	"livable Space"- for recent graduates seeking work and affordable housing	"Open yet accessible space" and greenspace	Infusing more tech fields and other opprtunities to collab with existing educational infrastructure	The character imagery doesn't necessarily fit the small town fee of Fairburn	Look at downtown Emory area as a case study example. Small scale feel with livable space integrated
#1, and #8							
The Tech center should also include the technology that the theater/movie industry need.	Ve talked about op-up art fairs nd art education/ rt classes in a revious meet. erhaps that could appen there	Alliance Theater has awesome Community Programming which may have a fit into this area.	Add workforce training and technical schools to the campus; could partner with Atlanta Technical College	Like the look of #1 with the roundabout, openness and accessibility	Workforce opportunities with Remote working space	Bike patrol on campus	
		Amphitheater for Fairburn for the arts	Space for local Art	Art Fairs			



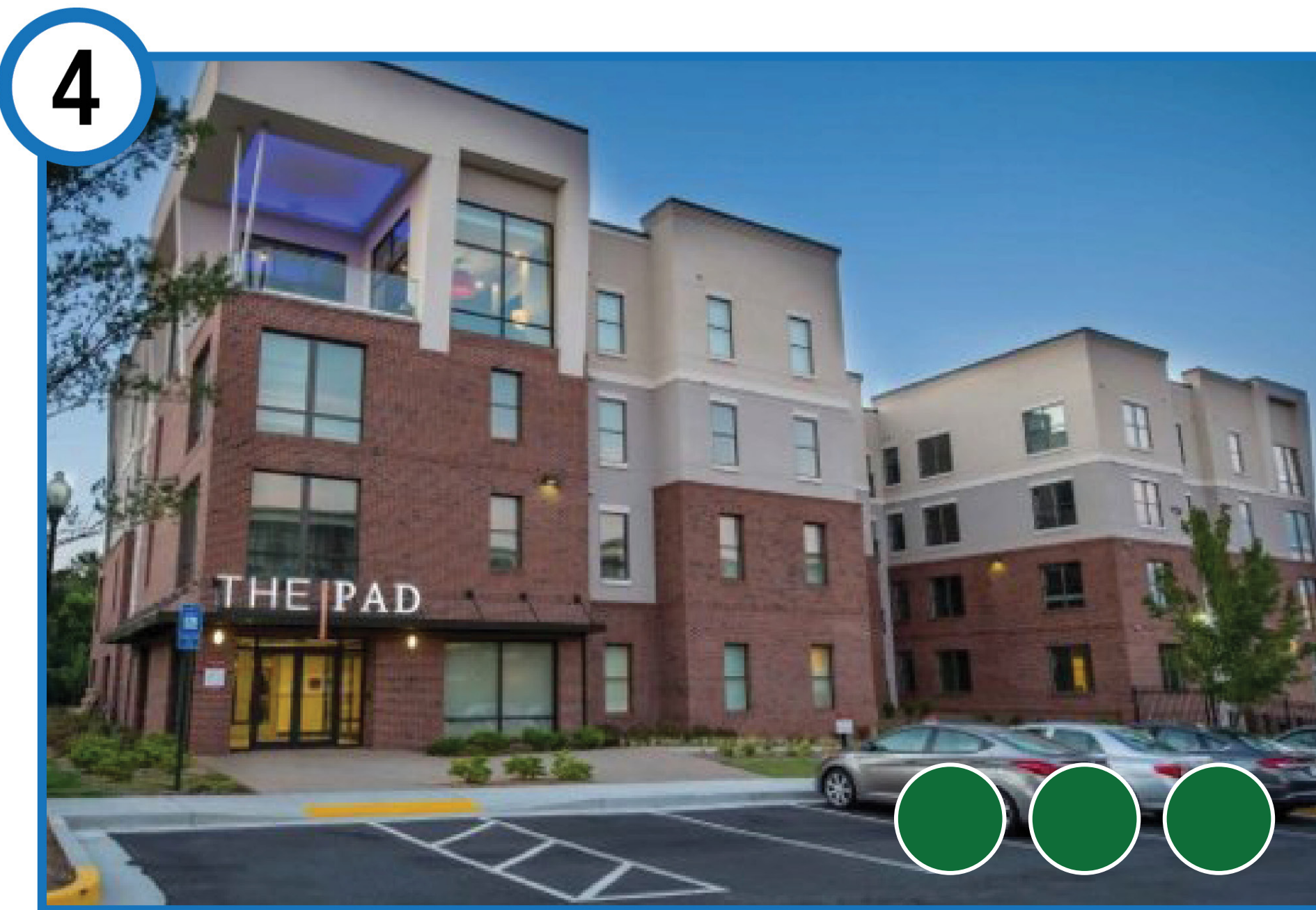
1 STORY SHOPPING CENTER



1 STORY SHOPPING CENTER



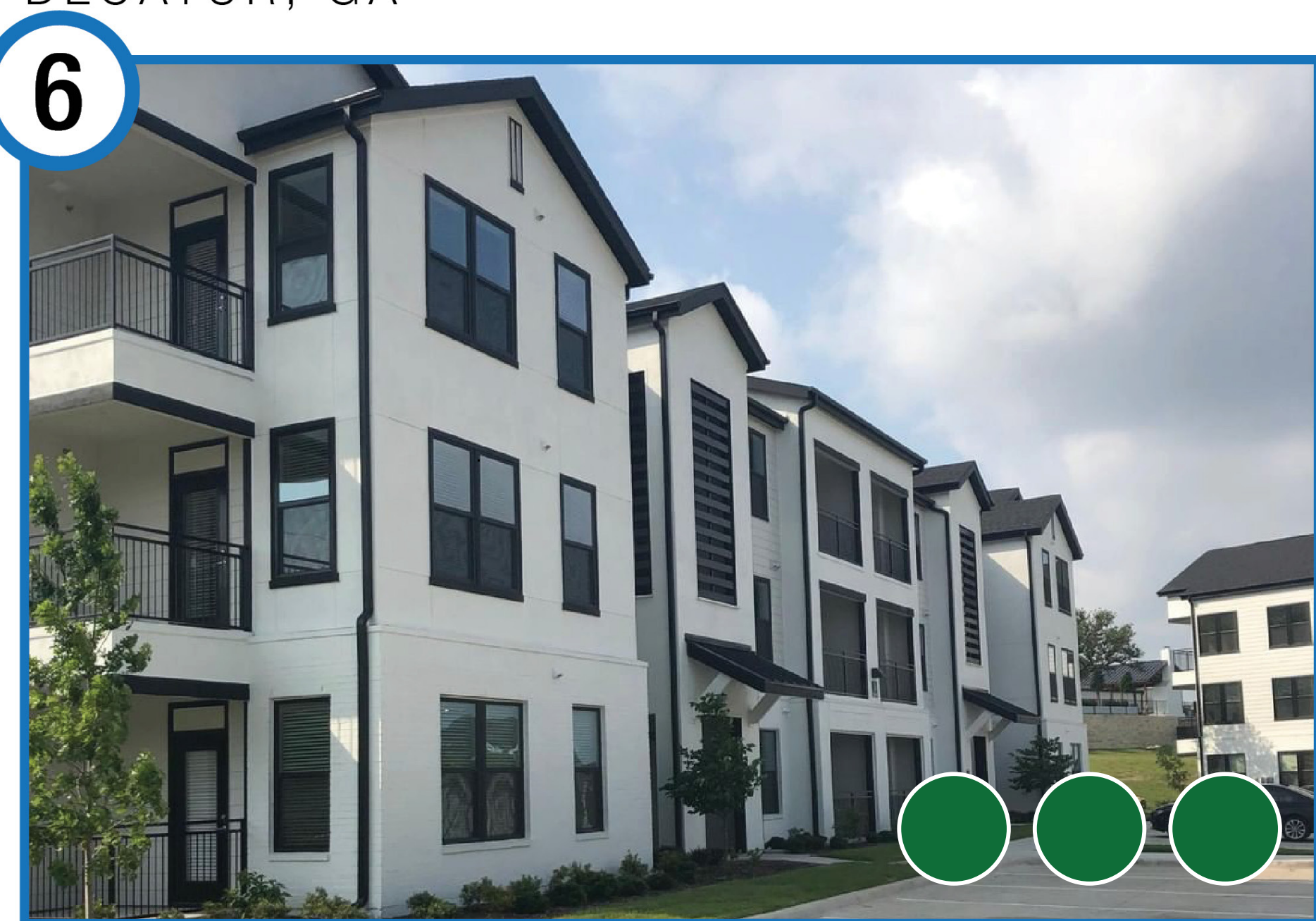
120 WEST TRINITY PLACE  
DECATUR, GA



3 STORY MULTIFAMILY



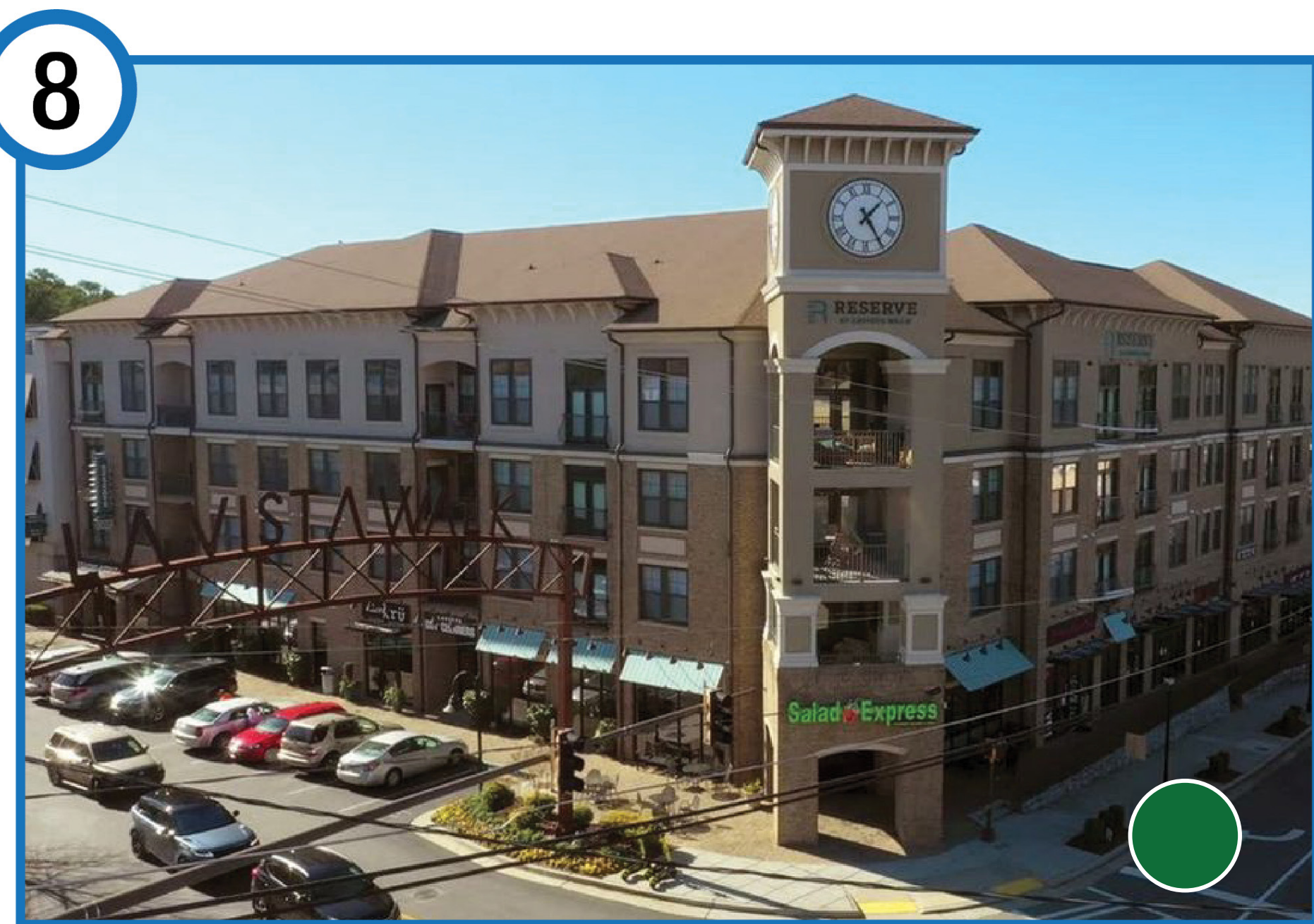
3 STORY TOWNHOMES



3 STORY MULTIFAMILY



3 STORY MIXED-USE



4 STORY MIXED-USE



5 STORY MULTIFAMILY



# FOCUS AREA 2

## FAIRBURN EDUCATION CAMPUS AREA

### QUESTIONS

What is going on? What is your experience?

**Area 4:** US 29/Broad Street - West of Elder Street to east of NE Broad Street

**Area 5:** US 29/Broad Street – East of Georgia Military College

### NOTES

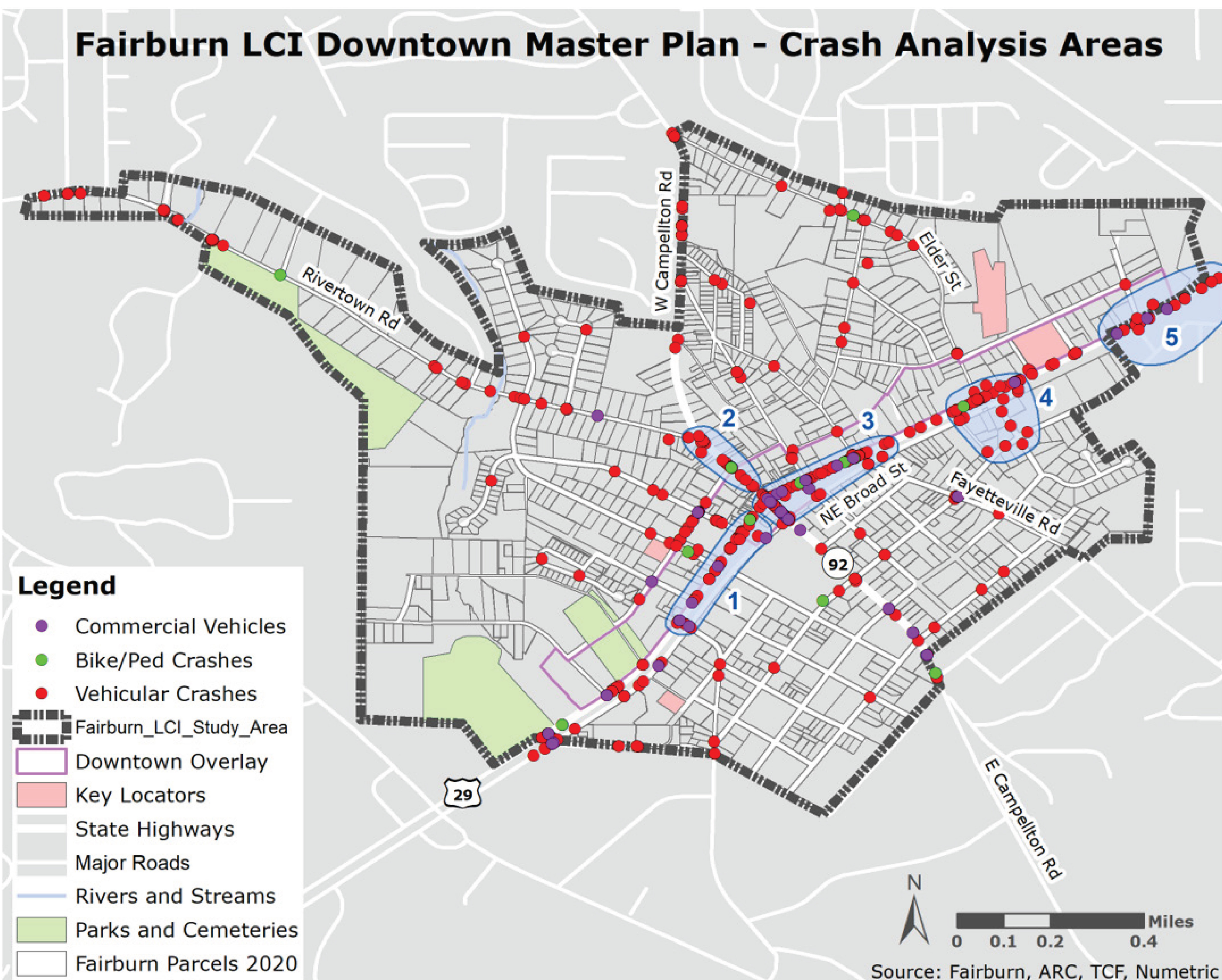
More crosswalks

Excellent lighting

A pedestrian bridge

Trails, Bike access, crosswalks. Bike public safety, signage, lighting

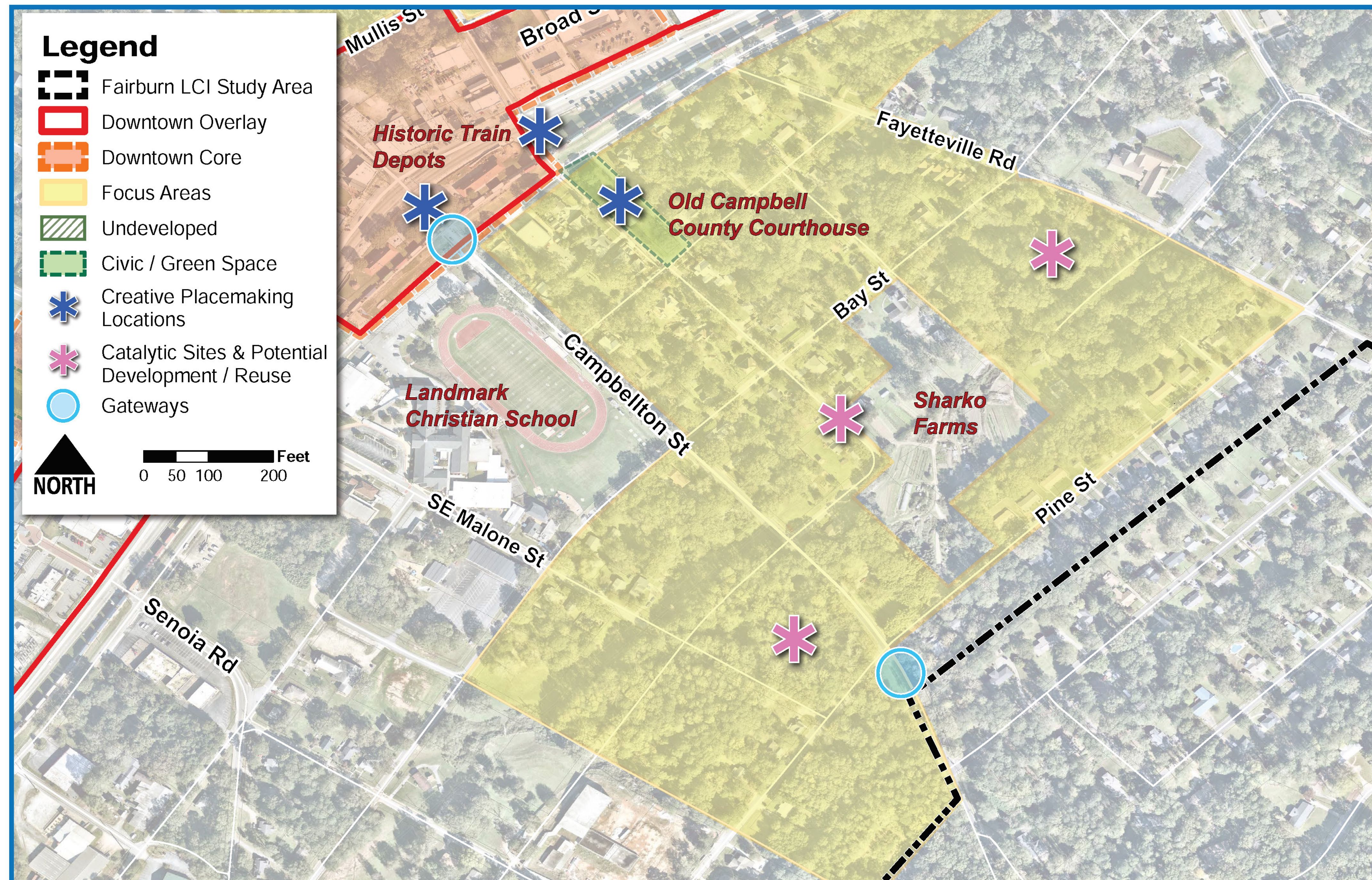
bike lanes





# FOCUS AREA 3

## SOUTH DOWNTOWN NEIGHBORHOOD



1 STORY CLUSTER HOMES



TRADITIONAL NEIGHBORHOOD



3 STORY TOWNHOMES



SINGLE FAMILY



2 STORY TOWNHOMES



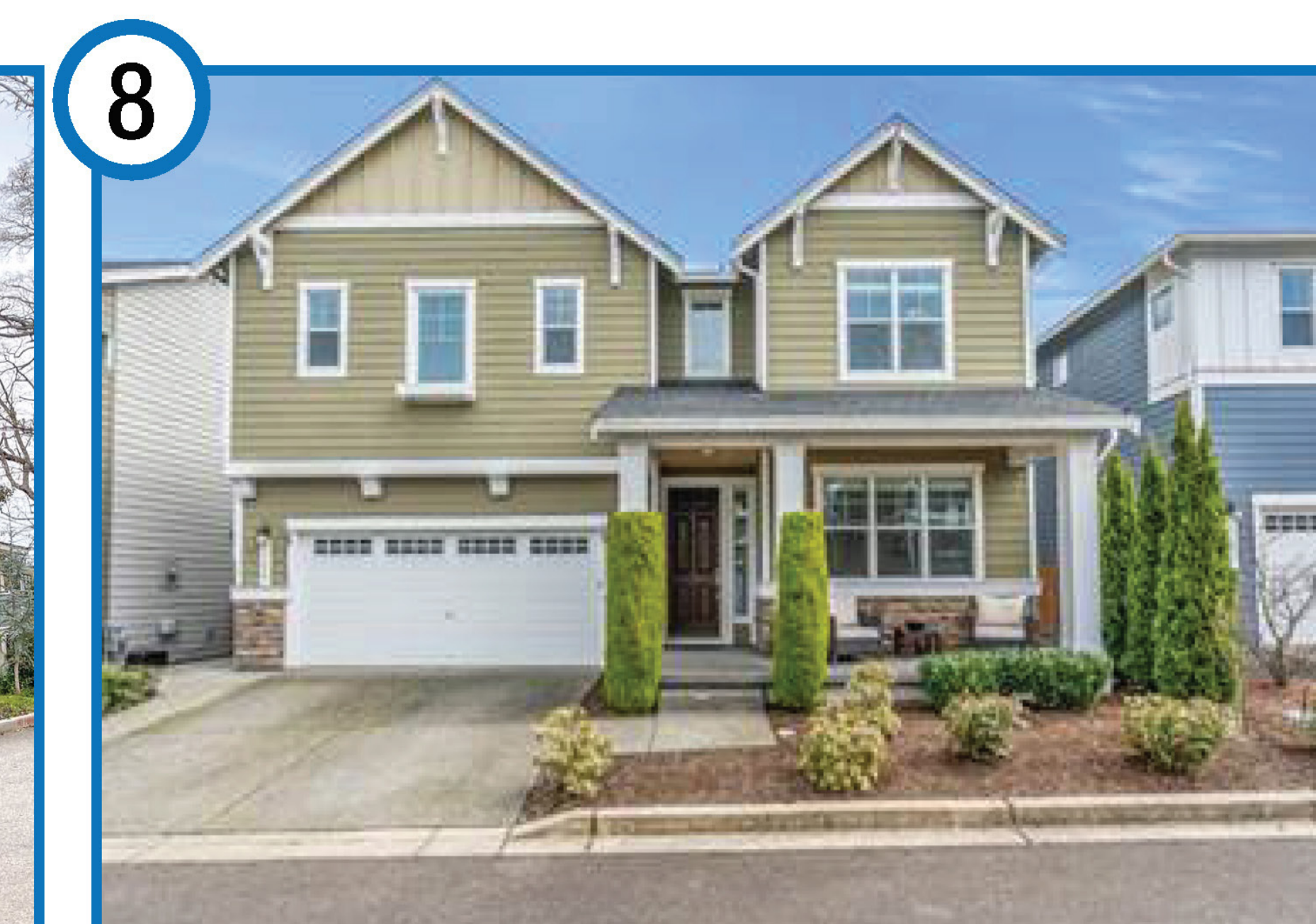
3 STORY TOWNHOMES

### NOTES

Don't see tiny homes on here. could add tiny homes that are well done	Lots of 2 & 7 - the more traditional patterns	important to maintain that residential feel. love 2& 7. Like 1, but concerned that it could be too concentrated	would like to see modern bungalows	2 creates the residential feel and walkability	Not number 6 or 9. Keep single family rather than multi-family	no demolition of exiting homes for denser or more modern homes	consensus that campbellton is the most important connection to downtown
Could there be an installation of art? could be coordinated with a pocket park? extend reach of public art	Courthouse will be remodeled - can this become a centerpiece for the area? event or meeting place, connectivity	Landmark Christian is adjacent - could be tied into the neighborhood. school attracting parent interest to move to Fairburn	a name - South of Broad?	A gathering space to bring the neighborhood together. dog park or small park, community garden	potentially 2-3 plex to preserve affordability, but well designed to look like single family	lighted* pedestrian walkway, sidewalks and greenways to get to downtown	bike lanes and walking bridges?  pocket park, community garden
	parklet space or greenspace	activities at the courthouse to catalyze connectivity	I think you need to keep the traditional feel of the existing homes	Residential feel and walkability	Modern bungalows would look great	Scharko farms is a great but under-recognized asset in this area...large version of community garden	



TRADITIONAL NEIGHBORHOOD



TRADITIONAL NEIGHBORHOOD

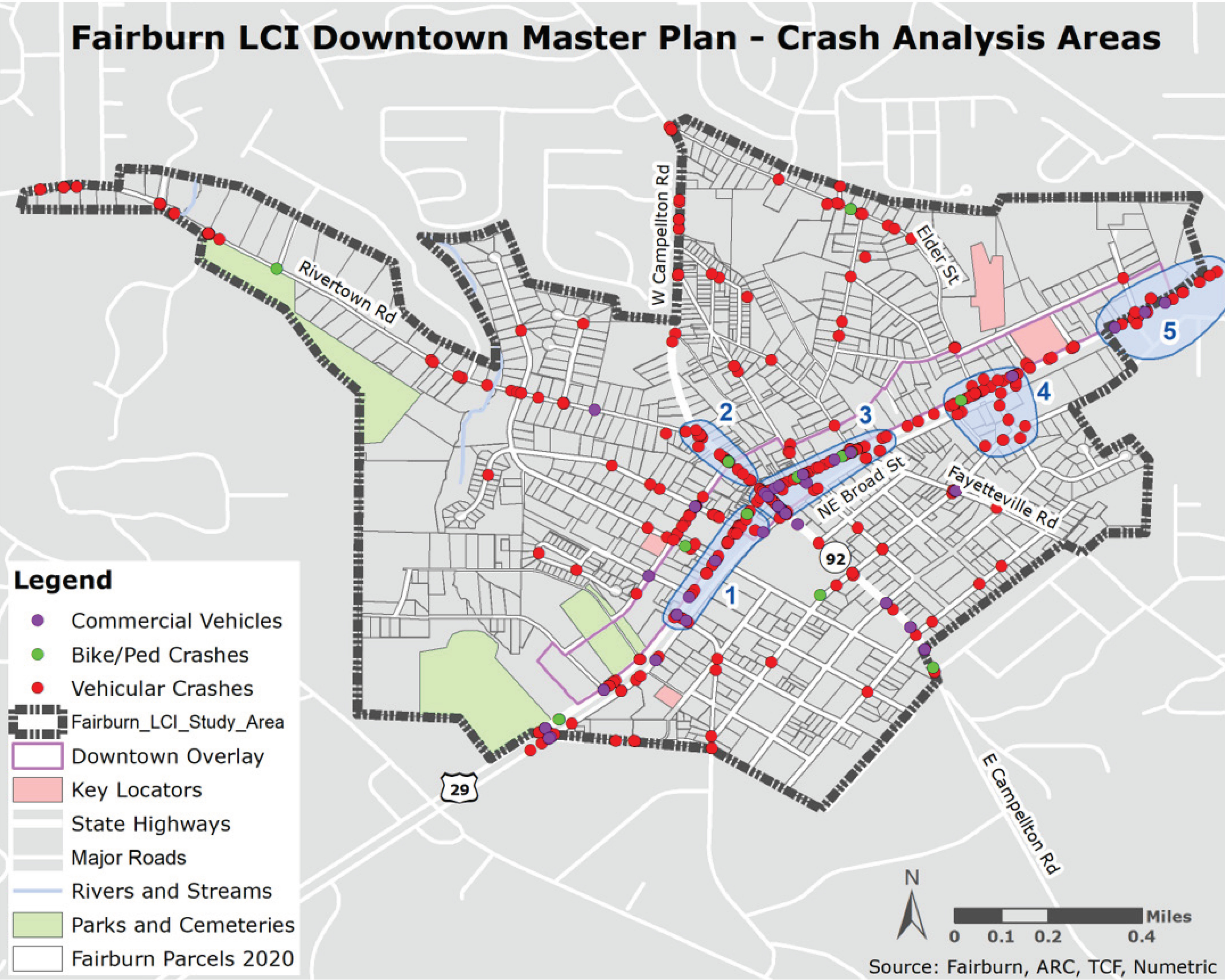


3 STORY TOWNHOMES



# FOCUS AREA 3

# SOUTH DOWNTOWN NEIGHBORHOOD



## QUESTIONS

What is going on? What is your experience?

**Area 1:** US 29/Broad Street – Senoia Road to Smith Street

**Area 3:** US 29/Broad Street – W Campbellton Road to E. of Strickland Street (Family Dollar)

General safety concerns?

## NOTES

The low bridge creates problems in this portion of the city	lots of traffic on Campbellton - folks walk a street over. sometimes walk in the street instead of the sidewalk	I like connectivity to the underpass as the primary access point to Downtown for pedestrian access	Could all large truck traffic be kept on 74 to cross the tracks, not allowed on smaller streets	A lot of people walk on Cole St, parallel to Campbellton, due to much less traffic, safer	pedestrian lighting	wide sidewalks and great lights	pedestrian access - sidewalks to downtown
Sidewalks , greenways							